

AGENDA

Meeting: Melksham Area Board
Place: Melksham United Church, 4 High St, Melksham, SN12 6JU
Date: Tuesday 3 September 2019
Time: 7.00 pm

Including the Parishes of Atworth, Broughton Gifford, Melksham, Melksham Without, Steeple Ashton, Bulkington, Keevil, Great Hinton, Poulshot, Semington and Seend

The Area Board welcomes and invites contributions from members of the public. The chairman will try to ensure that everyone who wishes to speak will have the opportunity to do so.

If you have any requirements that would make your attendance at the meeting easier, please contact your Democratic Services Officer.

Refreshments and networking opportunity from 6:30pm

Please direct any enquiries on this Agenda to Kevin Fielding (Democratic Services Officer), direct line 01249 706612 or email kevin.fielding@wiltshire.gov.uk

All the papers connected with this meeting are available on the Council's website at www.wiltshire.gov.uk

Press enquiries to Communications on direct lines (01225) 713114 / 713115

Wiltshire Councillors

Cllr Pat Aves, Melksham North	Cllr Jon Hubbard, Melksham South
Cllr Hayley Illman, Melksham Central	Cllr Phil Alford, Melksham Without
Cllr Jonathon Seed, Summerham and Seend (Chairman)	North

RECORDING AND BROADCASTING NOTIFICATION

Wiltshire Council may record this meeting for live and/or subsequent broadcast on the Council's website at <http://www.wiltshire.public-i.tv>. At the start of the meeting, the Chairman will confirm if all or part of the meeting is being recorded. The images and sound recordings may also be used for training purposes within the Council.

By entering the meeting room you are consenting to being recorded and to the use of those images and recordings for broadcasting and/or training purposes.

The meeting may also be recorded by the press or members of the public.

Any person or organisation choosing to film, record or broadcast any meeting of the Council, its Cabinet or committees is responsible for any claims or other liability resulting from them so doing and by choosing to film, record or broadcast proceedings they accept that they are required to indemnify the Council, its members and officers in relation to any such claims or liabilities.

Details of the Council's Guidance on the Recording and Webcasting of Meetings is available on request.

	Time
<p>1 Chairman's Welcome, Introduction and Announcements (<i>Pages 1 - 8</i>)</p> <p>Chairman's Announcements:</p> <ul style="list-style-type: none"> • How Dementia Friendly is Wiltshire? • Recycling Week 2019 • Representation on Special School Provision in North Wiltshire • Melksham Community Expo, 20 September • Resignation of Cllr Roy While 	<p>7:00pm</p>
<p>2 Apologies for Absence</p>	
<p>3 Minutes (<i>Pages 9 - 18</i>)</p> <p>To confirm the minutes of the meeting held on Wednesday 5 June 2019</p>	
<p>4 Declarations of Interest</p> <p>To receive any declarations of disclosable interests or dispensations granted by the Standards Committee</p>	
<p>5 Melksham 800th Anniversary Market Charter Celebrations - September 2019</p> <p>Terri Welch - 800th Anniversary Working Group</p>	
<p>6 Melksham Skatepark Extension (<i>Pages 19 - 22</i>)</p> <p>James Threlfall MBE</p>	
<p>7 Youth Intervention Project - update (<i>Pages 23 - 24</i>)</p> <p>Sasha Hart - Community Family Care</p>	

8 **Age-Friendly Melksham - next steps**

Cllr Jon Hubbard

9 **Campus update** (*Pages 25 - 26*)

Cllr Alison Bucknell, Cabinet Member for South Wiltshire Recovery, Communications, Communities, Leisure and Libraries and Louise Cary - Acting Head of Service Communities Leisure Operations, Wiltshire Council

10 **Designation of BRAG picnic area as local green space in Seend Neighbourhood Plan** (*Pages 27 - 28*)

Teresa Strange & Mike Sankey

11 **Area Board sub groups** (*Pages 29 - 36*)

Melksham Wellbeing Group – Cllr Aves

Community Area Transport Group (CATG)

- Election of Chairman

12 **Written Partner Updates** (*Pages 37 - 60*)

To receive any written updates from the following partners:

- Community Area Partnership
- Wiltshire Police
- Office of the Wiltshire Police and Crime commissioner
- Dorset & Wiltshire Fire and Rescue Service
- NHS Wiltshire/Clinical Commissioning Group
- Healthwatch Wiltshire
- Melksham Town Council
- Parish Council Nominated Representatives
- Melksham Chambers of Commerce
- Melksham Senior People's Forum
- Older Persons Champion
- Young Melksham
- Trans Wilts Cic
- Melksham Shed

13 **Grant Funding** (*Pages 61 - 70*)

The Area Board members are asked to consider applications to the Community Area Grants scheme. *Full details of all grant applications are contained in the agenda pack.*

- **Shaw Emergency Volunteers requesting £321 towards costs of walkie talkies**

14 **Youth Grant Funding** (*Pages 71 - 82*)

The Area Board members are asked to consider applications to the Youth Grants scheme. *Full details of all grant applications are contained in the agenda pack.*

- **Repair Academy requesting £4,000 towards Recycle Wiltshire bike project with young people**

15 **Public questions**

Members of the public are invited to ask questions relating to Area Board business

16 **Next Meeting**

Wednesday 16 October at 2pm - Special Older Persons themed Melksham Area Board, venue to be confirmed

17 **Close**

9:00pm

Agenda Item 1

Chairman's Announcements

Subject:	How Dementia Friendly is Wiltshire?
Web contact:	https://www.healthwatchwiltshire.co.uk/report/2019-07-24/how-dementia-friendly-wiltshire

Healthwatch Wiltshire's latest report is now available online. It gathered the views and experiences of more than 100 people in the county who are affected by dementia.

“How Dementia Friendly is Wiltshire?” focuses on two elements - how local dementia friendly initiatives are working to make their area more dementia friendly, and how much those living with dementia feel they benefit from them.

Healthwatch Wiltshire visited 15 community groups across Wiltshire and invited people to take part in a survey or a 1:1 interview to gather their feedback.

The report details what people living with dementia and their carers value most about dementia friendly initiatives and can be accessed via the link above.

Chairman's Announcements

Subject:	Recycling Week 2019
Web contact:	https://www.recyclenow.com/recycling-knowledge/recycle-week-campaign

Now in its 17th year, Recycle Now's Recycle Week campaign is a celebration of recycling.

The aim of the week is to encourage everyone to recycle more, by helping to understand the benefits of recycling items from all around the home and by offering tips and suggestions to make it easier to recycle!

Recycle Week 2019 will be full of action asking people to rinse, crush, squash, sort and separate. In the bathroom, the kitchen, the office and the great outdoors. Getting them to do something powerful and radical that will really make a difference.

This year's theme: Recycling. It's in our own hands

In 2018 Britain woke up to recycling.

2019 is the year we're taking action.

The theme will be 'Recycling. It's in our own hands' and the campaign will run from 23rd to 29th September.

Wiltshire Council will be issuing a series of social media posts via its Facebook and Twitter accounts, aimed at reminding residents of the wide range of materials that they can recycle through the council's kerbside collection schemes, household recycling centres, as well as making better use of charity re-use shops, and methods to help reducing our reliance on single-use plastics and other packaging.

For residents:

Wiltshire Council's website contains lots of useful information to support its residents in recycling as much of the waste they generate as possible:

<http://www.wiltshire.gov.uk/recycling>

<http://www.wiltshire.gov.uk/what-happens-to-recycling>

<http://www.wiltshire.gov.uk/household-recycling-centres>

Chairman's Announcements

Recycle Now's website also has a range of valuable resources and some can be accessed via the following links:

For businesses:

<https://www.recyclenow.com/recycling-knowledge/getting-started/recycling-at-work>

For schools:

<https://www.recyclenow.com/recycling-knowledge/getting-started/recycling-at-school>

Chairman's Announcements

Subject:	Representation on Special School Provision in North Wiltshire
Web contact:	http://consult.wiltshire.gov.uk/portal/education/

Wiltshire Council would like to draw your attention to its proposal for special schools in north Wiltshire.

There will be a statutory notice published at 9am on Monday 2nd September 2019 regarding the closure of:

- St Nicholas School, (Special) Malmesbury Road, Chippenham, SN15 1QF
- Rowford School, (Special) St Edith's Marsh, Rowde, SN10 2GG
- Larkrise School, (Special) Ashton Street, Trowbridge, BA14 7EB

and the related opening of a new amalgamated special school across the three existing sites.

It is proposed that:

- A new maintained school is established with a single leadership team for the existing St Nicholas, Rowdeford and Larkrise schools as soon as possible, and no later than 1 September 2021.
- The closure of St Nicholas, Rowdeford and Larkrise schools, as related proposal, occurs no later than the 31 August 2021.
- St Nicholas and Larkrise stay in use on their current sites until the new provision is ready, and it is appropriate for children to transition to the new site at Rowdeford.
- The Council will consult on the appropriate number of sites when most of the new places are available.

Wiltshire Council will open the consultation outlined via the link above.

Responses to the proposal (made via an online survey found at the above-mentioned consultation portal) must be received by the Council by 9am on Monday 30 September 2019.

If you or any of your residents have any questions about this, or would like any further information please email SpecialSchools@wiltshire.gov.uk or write to Special Schools Consultation, Commissioning Team, Wiltshire Council, Bythesea Road, Trowbridge, BA14 8JN.

19 August 2019

Resignation of Cllr Roy While

Cllr Roy While (Melksham Without South) has resigned from his position as a councillor due to ill health.

We would like to take this opportunity to thank Cllr While for his dedication to Wiltshire, first as an officer of West Wiltshire District Council, and then as a district, county and unitary councillor.

For matters relating to the Melksham Without South division, please contact committee@wiltshire.gov.uk in the interim.

MINUTES

Meeting: MELKSHAM AREA BOARD
Place: Seend Community Centre
Date: 5 June 2019
Start Time: 7.00 pm
Finish Time: 8.55 pm

Please direct any enquiries on these minutes to:

Kevin Fielding (Democratic Services Officer), Tel: 01249 706612 or (e-mail)
kevin.fielding@wiltshire.gov.uk

Papers available on the Council's website at www.wiltshire.gov.uk

In Attendance:

Wiltshire Councillors

Cllr Phil Alford, Cllr Pat Aves, Cllr Jon Hubbard, Cllr Hayley Illman and
Cllr Jonathon Seed (Chairman)

Wiltshire Council Officers

Peter Dunford – Community Engagement Manager
Kevin Fielding – Democratic Services Officer
Vicky Bodman - Community Housing Project manager Strategic Assets
Jo Bowerbank - Commissioner, Mental Health Inclusion
Nikki Foster - Healthier Communities Project Co-ordinator
Emily Edwards - Community Health Trainer for Melksham and Corsham

Town and Parish Councils

Broughton Gifford Parish Council – Mike Griffiths
Melksham Town Council - Adrienne Westbrook
Melksham Without Parish Council – Theresa Strange, Richard Wood & Paul Carter
Seend Parish Council – Sue Bond & Pamela Akerman

Partners

Wiltshire Police – Inspector Andy Fee
Melksham Seniors – Martin Pain
Melksham Shed – Chris Pickett
Selwood Housing – Hannah Perkins

Total in attendance: 40

<u>Agenda Item No.</u>	<u>Summary of Issues Discussed and Decision</u>
31	<p><u>Election of the Chairman</u></p> <p>Nominations were sought for the position of Chairman.</p> <p>Decision</p> <ul style="list-style-type: none"> • To appoint Cllr Jonathon Seed as Chairman for the forthcoming year.
32	<p><u>Election of the Vice-Chairman</u></p> <p>Nominations were sought for the position of Vice Chairman.</p> <p>Decision</p> <ul style="list-style-type: none"> • To appoint Cllr Pat Aves as Vice Chairman for the forthcoming year.
33	<p><u>Appointments to Working Groups and Outside Bodies</u></p> <p>The following appointments to outside bodies and working groups were made for the forthcoming year:</p> <ul style="list-style-type: none"> • Community Area Transport Group (CAT-G) – Cllr Roy While • Melksham Wellbeing Group – Cllr Pat Aves • Melksham Neighbourhood Plan – Cllr Phil Alford
34	<p><u>Chairman's Welcome, Introduction and Announcements</u></p> <p>The Chairman welcomed everybody to the Seend Community Centre for the meeting of the Melksham Area Board.</p> <p>The Chairman thanked Cllr Jon Hubbard for his chairmanship of the Area Board during the previous year.</p> <p>The following Chairman's Announcements contained in the agenda pack were noted:</p> <ul style="list-style-type: none"> • Area Board to go single-use-plastic free • Melksham Young People's Awards 2019 • Melksham Campus – May 2019 newsletter

	<ul style="list-style-type: none"> • Winter weather • Highway improvements and traffic survey requests • North Wessex Downs walking festival • Seend Lye Field children's recreational facilities
35	<p><u>Apologies for Absence</u></p> <p>Apologies were received from Cllr Roy While.</p>
36	<p><u>Minutes</u></p> <p>Decision</p> <ul style="list-style-type: none"> • The minutes of the meeting held on Wednesday 24 April 2019 was confirmed as the correct record.
37	<p><u>Declarations of Interest</u></p> <p>Agenda item No:9 Seend Community Led Housing Project – Cllr Jonathon Seed. Seend Community Led Housing Project board member.</p>
38	<p><u>Wiltshire Police update</u></p> <p>Inspector Andy Fee introduced the written report contained in the agenda pack.</p>
39	<p><u>Youth Grant Funding</u></p> <p>The Area Board members are asked to consider one application for Youth Grant funding:</p> <p>Decision</p> <ul style="list-style-type: none"> • Youth Adventure Trust awarded £994 towards Vulnerable Young People from Melksham 2019 Activity Days
40	<p><u>Melksham Tennis Club - future arrangements of the campus tennis courts</u></p> <p>The Chairman gave a brief outline of the current situation re the campus tennis courts and the proposed public access to the tennis courts with bookings through the Melksham Tennis Club.</p> <p>Points made included:</p>

- The tennis court construction was completed on 8 May 2019
- The surface is required to cure for at least four weeks before the final colour spraying.
- This is due to take place week commencing 10 June 2019 weather permitting
- During this time the court surface needs to be kept as clean as possible clean to avoid it needing to be power washed prior to the colour spray
- In order to limit the risk of this, Wiltshire Council agreed that play be limited to the tennis club until it is colour sprayed
- Following the colour spraying the courts cannot be played on for a further five days. The courts will be locked down to ensure no-one accesses them
- After this time the courts will be made available for public use
- The tennis club has been granted shared occupancy with Wiltshire Council for the period between completion and issuing them with a lease. The lease is being progressed.

The booking procedure outlined by the club will be as follows until Wiltshire Council formally agrees the lease arrangement.

- The gate furthest from Melksham House will be for public use
- The combination on the lock will be changed regularly
- A booking form has been produced and will be available on the club website and the club noticeboard
- The club is happy to take enquiries for bookings prior to them becoming available (following the colour spraying)
- Enquiries to the club secretary on 01225 704448 or melkshamtennis@talktalk.net

Area Board members were disappointed that representatives of Melksham Tennis Club members were not in attendance to discuss the issue, as their input would have been most welcomed.

Two former members of the Melksham Tennis Club were present. They stated that the actual number of members of the tennis club was low and many of them were now quite elderly. The facilities at the club were poor, there being no toilets or shelter from bad weather. They were concerned that the club would not act in

	<p>the best interests of the town if granted a lease by Wiltshire Council.</p> <p>Area Board members discussed possible alternatives for court bookings, to be taken via the Town Council, Tourist Information Centre, or the Campus when this building is open.</p> <p>Decision</p> <ul style="list-style-type: none"> • That the Melksham Area Board requested that Wiltshire Council ensured that proper public access was granted to the Melksham Campus tennis courts, and that the Melksham Tennis Club should be members of the Lawn Tennis Association and operate an approved online booking system.
41	<p><u>Seend Community Led Housing Project</u></p> <p>Vicky Bodman - Community Housing Project manager Strategic Assets, Wiltshire Council & George Clarke - Seend Community Led Housing Project</p> <p>Points made included:</p> <ul style="list-style-type: none"> • That the objects of the Community Interest Company were to carry on activities which benefitted the community and in particular (without limitation) to provide, manage and maintain affordable homes and other community assets for the benefit of the population of the parish of Seend in Wiltshire. • Formed 2018. • 200+ members. • Working with the Neighbourhood Plan and Parish Council. • Rural Housing Needs Survey undertaken to highlight need. • White Horse Housing appointed. • Architect appointed. • Options agreement being signed for land. <p>The Chairman thanked Vicky Bodman and George Clarke for their presentation.</p> <p>The Chairman also congratulated Seend Community Led Housing Project for</p>

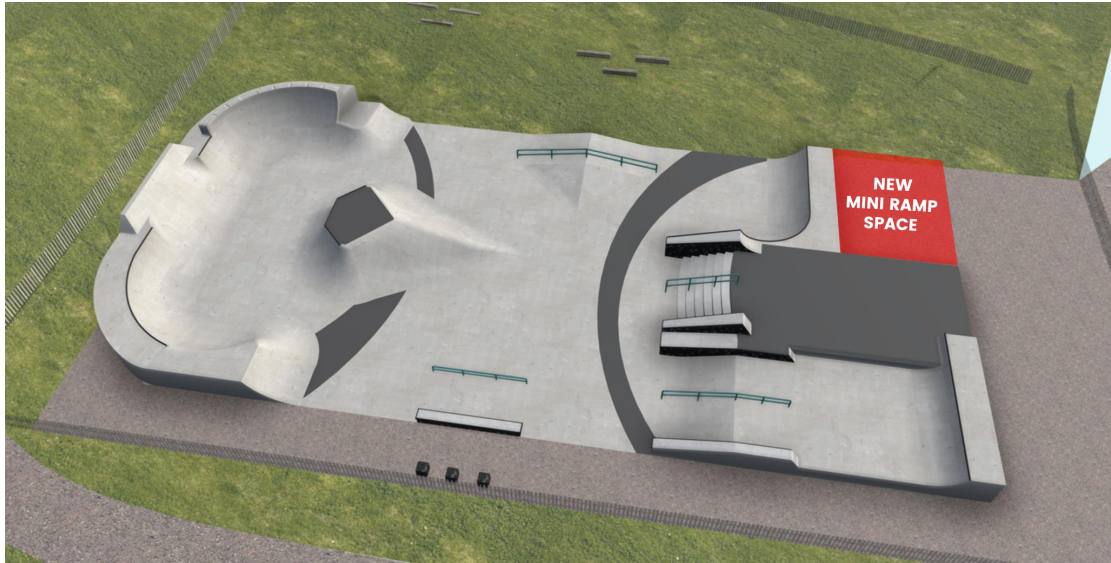
	<p>their hard work.</p>
<p>42</p>	<p><u>Mental Health Awareness</u></p> <p>Councillor Phil Alford - Mental Health Champion, Wiltshire Council advised the meeting that he had been appointed the Wiltshire Council Mental Health Champion, a role that he was looking to develop into a more strategic one as time progressed.</p> <p>Jo Bowerbank - Commissioner, Mental Health Inclusion, Wiltshire Council and Susan Challis - Mental Health Commissioner, NHS Wiltshire Clinical Commissioning Group gave an overview of their roles and of how Wiltshire Council, the NHS and Public Health worked together and with other agencies.</p> <p>A fuller roundtable discussion would be held with partners at a later date to discuss these issues in more detail.</p> <p>The Chairman thanked Cllr Alford, Jo Bowerbank and Susan Challis for their presentation.</p>
<p>43</p>	<p><u>Melksham Healthier Communities Project</u></p> <p>Nikki Foster - Healthier Communities Project Co-ordinator & Emily Edwards - Community Health Trainer for Melksham and Corsham</p> <p>Points made included:</p> <ul style="list-style-type: none"> • That the Healthier Communities Project was a 3 year project funded by Sport England's Tackling Inactivity in Areas of Economic Disadvantage programme. • In Melksham the focus is the High Street/ Queensway/ Forest areas. • Partnership funding had also been given by Selwood Housing, Places Leisure and Public Health colleagues. • Its aim was to increase levels of physical activity amongst inactive individuals in 10 communities in Wiltshire with high levels of disadvantage and where sport and physical activity levels were known to be low. • Local activities at venues such as the Riverside Club, Forest Community Centre and Scout Hut would include walking netball, walking football, a bootcamp, and This Girl Can activities aimed at young women. • Health Trainers work on a one to one basis to support behaviour change

	<p>and improve health. They concentrate on behaviours associated with ill health including unhealthy eating often linked to obesity, stop or reduce smoking, sensible drinking, increasing physical activity, building confidence and motivation to change and boosting self-esteem.</p> <ul style="list-style-type: none"> • They also signpost and support clients to access other services and activities where appropriate. • The service is open to anyone over the age of 18 years of age and, can be accessed by appointment in a variety public venues in Wiltshire such as libraries and leisure centres. Health Trainers work with their clients for six sessions, building motivation and confidence to enable the client to help themselves and maintain the changes. <p>The Chairman thanked Nikki Foster and Emily Edwards for their presentation.</p>
44	<p><u>Big Pledge 2019 Launch</u></p> <p>A short film was shown highlighting Wiltshire Council's Big Pledge 2019 Launch which Celebrated this year's ICC Cricket World Cup coming to the UK this summer.</p> <p>Big Pledge was launched on 3 June and runs until 19 July 2019. In the spirit of the theme of the meeting - health, wellbeing and physical activity - all were encouraged to get involved.</p>
45	<p><u>Melksham 800th Anniversary Market Charter Celebrations - September 2019</u></p> <p>Adrienne Westbrook - 800th Anniversary Working Group gave a short presentation that highlighted a proposed weekend of events to celebrate Melksham's 800th Anniversary of it's Market Charter.</p> <p>Points made included:</p> <p>That events over the weekend would include:</p> <ul style="list-style-type: none"> • BBC Breakfast Show from Market Place. • Exhibition from local Schools and Melksham Remembers. • VIP Plaque unveiling. • Town Criers Competition to include Folk dancing all in the Market Place. • Medieval Banquet with entertainment paid for event.

	<ul style="list-style-type: none"> • Re-enactment in KGV Free event with squire training, archery, craft stalls and food. <p>The Chairman thanked Adrienne Westbrook for her presentation.</p>
46	<p><u>Area Board sub groups</u></p> <p>Melksham Wellbeing Group – Cllr Aves</p> <ul style="list-style-type: none"> • No meeting held. <p>Community Area Transport Group – Cllr While</p> <p>CATG recommendations approved by the Area Board:</p> <p>CATG annual budget plus surplus carried forward totalling £17,025 in 2019/20:</p> <ul style="list-style-type: none"> • Seend High Street crossing facility with coloured surfacing £795 • Broughton Gifford – traffic management at Bishops Seat • Broughton Gifford – gateway features at 3 sites • Broughton Gifford - Mill Lane control of freight movement £3,300 • Steeple Ashton – Acreshort Lane playground warning sign £300 • Melksham Coronation Road - 20 mph limits £13-15,000 • Melksham - Lowbourne Road and Church Lane bus shelter feasibility • Air Ambulance HQ – signing scheme to include directional and hazard warning signing • Steeple Ashton – Newleaze dropped kerbs £2,500-£3,000 • Pavement and Footway improvement schemes
47	<p><u>Written Partner Updates</u></p> <p>Written updates contained in the agenda pack were received from the following partners:</p> <ul style="list-style-type: none"> • Dorset & Wiltshire Fire and Rescue Service • NHS Wiltshire/Clinical Commissioning Group • Healthwatch Wiltshire • Melksham Shed • Melksham Seniors – That the group had now become a management

	<p>group, and would be running in a different manner to what it had in the past. The group now had a new Chairman – Martin Pain.</p> <p>The Chairman thanked all partners for their updates.</p>
48	<p><u>Grant Funding</u></p> <p>The Area Board members are asked to consider one application for Community Area Grant funding:</p> <p>Decision</p> <ul style="list-style-type: none"> • Councillor led bid from Jon Hubbard awarded £300 towards a Contact the Elderly boat trip
49	<p><u>Public questions</u></p> <p>Jonathan Osborn GP reported that the surgeries at Spa, Giffords and St Damian’s were now working together to provide extended hours and weekend access to primary care services. He is keen to have a dialogue with Cllr. Alford, the Health Trainer and Mens Shed as part of efforts to promote “social prescribing” outcomes.</p>
50	<p><u>Close</u></p>

Agenda Item 6



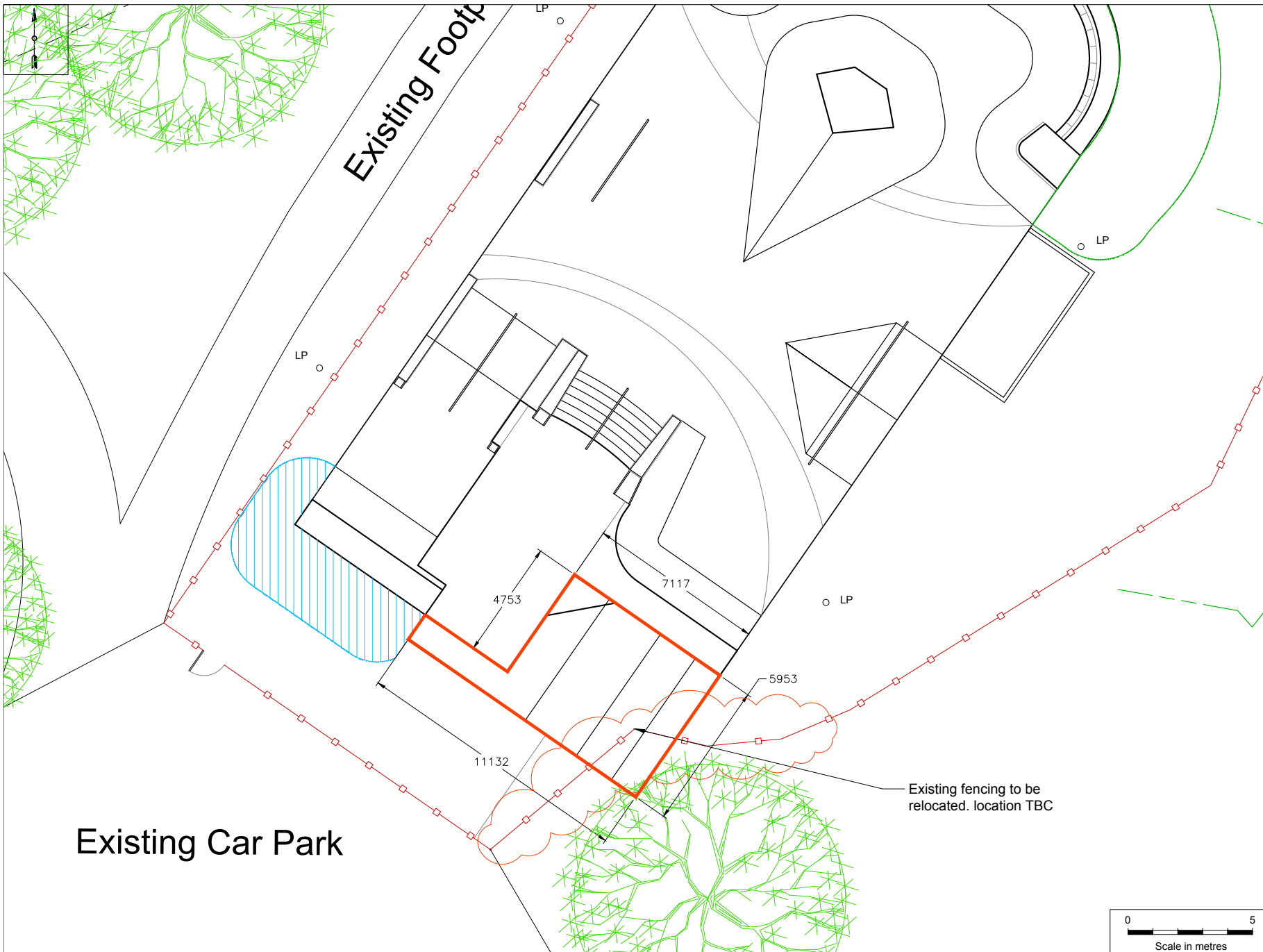


Melksham Skatepark 'Fifth Plaza' Extension



Wiltshire Council

ARTISTIC ENGINEERING



Legend

- Top Of Bank
- New concrete halfpipe extension
- LP Existing Lamppost
- Rubber mulch mounding

Notes

- All dimensions are in millimetres unless otherwise stated.

Rev	Note	Date

Project
Melksham Skatepark

Site Address
King George V Park
Melksham
SN12 6LL

Client
Wiltshire Council

CANVAS

Canvas Spaces Limited +44 (0)117 373 0818
12 Dorney Square Bristol www.canvaspaces.co.uk
BS21 7RG info@canvaspaces.co.uk
Canvas Spaces Limited, Registered no. 6723592
All content © Canvas Spaces

Title
Halfpipe Extension Plan

Scale		Size	
As Shown		A2	
Date	Drn	Ckd	Sgd
19/06/19	DW	-	-

Status
PRELIMINARY

Drawing no. 141 - P405	Rev -
----------------------------------	-----------------

0 5
Scale in metres

Melksham Targeted Intervention Service Update

The targeted intervention service was set up in April 2019 for a small number of young people aged 13 – 19 years old who are in need of early support to prevent problems from escalating. The service is targeted at young people who are not currently accessing support from other services and are below the threshold for statutory interventions/not eligible to access support from other intervention services.

CFC have linked in with Melksham Oak School and had two very positive meetings with the pastoral support team where young people suitable for being referred were discussed ahead of referrals in to the service being made. The number of young people discussed at the meeting exceeded capacity for the project and so discussions were had around those most in need of the targeted intervention support.

The pastoral support team have been very supportive of the project and have been excited to have somewhere to refer young people that are on the edge of thresholds for other services so that they get the support that they need to prevent issues from escalating.

The Safeguarding Lead for the school felt:

“the project is very much needed for a number of our vulnerable students who otherwise wouldn’t have access to any support. As a professional it’s great to have somewhere to signpost them rather than struggling to know what to offer.”

To date CFC have been working with 6 young people and an update on the service can be found below.

REFERRALS

Referrals received:

9 referrals received in to the service from Melksham Oak School to date

- **8 referrals accepted**, 1 rejected due to being out of area (Chippenham).
- 4 boys and 4 girls referred in for support ranging from 13 – 15 years old.
- 2 cases are closed, 4 cases are ongoing, and 2 are due to start in September.

Reasons for referral:

- Anger management and support to manage emotions
- Risky behaviour in community
- Low level anti social behaviour
- Low self esteem and poor body image
- At risk of criminal behaviour through drug use

SESSIONS

A total of 22 sessions have been undertaken with young people to date, with 72 hours of support provided.

At the initial session goals are agreed with young people on what the support will focus on. This has included improving behaviour at school and the community, being better able to manage feelings and emotions, and improving self esteem to date.

Young people also complete a questionnaire measuring emotional wellbeing and an outcomes star which looks at scoring different aspects of their life such as home, school, health, and friendships.

Young people sign up to the sessions and agree when and where they would like them to be held.

Session delivery:

Support sessions have taken place both at school and within the community depending on the preference of the young person. 3 young people have had sessions both at school and within the community and 3 have just had community based sessions.

Activities have included art based self esteem work, going for milkshakes, playing pool, going for walks, and playing football.

OUTCOMES

2 cases have closed:

- 1 case had 2 sessions of support before being transferred over to a Motiv8 worker for more targeted substance misuse support. These sessions enabled the young person to engage with the substance misuse support that they had previously refused.
- The other case had 6 sessions of support around managing feelings and how to deal with anger. At the end of the sessions the young person reported improved emotional wellbeing and parents reported improved behaviour at home and within the community.

Feedback from young people to date:

"I enjoy my time with my worker as it's my time and all about me. I feel happier and look forward to seeing Cally each week."

"I enjoyed seeing Alan as he understood and didn't tell me off. He listened and helped a lot."

NEXT STEPS

- **Continue supporting current young people and begin scheduled work with 2 new young people.**
- **Re engage with Melksham Oak at the beginning of term to discuss new referrals with a target of up to 8 new referrals for the autumn term.**
- **Discuss group options with Melksham Oak – potentially around self esteem and anger management as key themes from referrals to date. Target of 1 group to be delivered by January 2020.**

CASE STUDY

X is 13 and was referred to the service for support around managing emotions and keeping herself safe. X had low self esteem and had been staying out late in Trowbridge with older males which was a concern. X's parents had been trying to manage this and would be out late looking for her to return her home in order to try and keep her safe. This caused arguments and X's relationship with her parents was becoming strained.

X has had 4 sessions to date and has been engaging well the worker despite initially not wanting support. X has completed sessions using art to talk about issues and has had support around keeping safe. X has been more open with her parents and has been returning home at the agreed time which has reduced the tension in the household. X is currently making an inspirational quote board in her sessions to put up at home to boost her mood.



NEWS RELEASE

**For immediate
release**

9 August 2019

Changes made to Melksham Community Campus design following local community feedback

Local community feedback has helped shape some changes to the Melksham Community Campus design.

The Melksham Community Campus team has made some changes to the design of the proposed purpose-built centre in response to comments made through the formal planning application consultation.

The planning application for the campus was originally submitted in March.

Some of the key changes include:

- Sports hall moved further away from Cedar Close boundary
- Reduction in external height of sports hall
- Relocation of sports hall stores to west elevation
- Some internal layout changes at ground and first floor
- Review of lighting strategy across the site
- Review of landscape strategy
- Removal of MUGA

Once the revised proposals have been formally submitted to the planning department, an additional four week consultation period will follow to give the public another opportunity to provide feedback. A planning decision is expected by the end of the year with the completed facility being delivered by mid-2021.

Wiltshire Council Cabinet Member for Communities and Leisure, Allison Bucknell, said: “It’s only right that we take into consideration and listen to the feedback we’ve received. This campus will belong to the community and we want it to meet their needs.

“We’re still making good progress and on track for our completion date, and the work we’re doing now will result in providing a campus of high quality that we hope will be fully embraced by those who will use it.”

The designs for the modern Melksham Community Campus include a six-lane swimming pool and a learner pool, fitness suite, dance studio, library and community hub, sports hall, a café and office space. This will be in addition to the cricket pitch, outdoor bowls, and the new tennis courts, which were recently provided on the Melksham House site.

Regular updates on Melksham Community Campus can be found at www.wiltshire.gov.uk/community-environment-melksham-community-campus



The Seend Parish Neighbourhood Plan Steering Group is currently collecting evidence to support the designation of Local Green Spaces in their Neighbourhood Plan. Local Green Space (LGS) designation is a way to provide special protection in Neighbourhood Plans for green areas of particular importance to local communities.

The designation is very specific in that there are a number of criteria a space must satisfy in order to be suitable as LGS - see below extract from the National Planning Policy Framework (2019):

"The Local Green Space designation should only be used where the green space is:

- a) in reasonably close proximity to the community it serves;
- b) demonstrably special to a local community and holds a particular local significance, for example because of its beauty, historic significance, recreational value (including as a playing field), tranquillity or richness of its wildlife; and
- c) local in character and is not an extensive tract of land." (para. 100)

The BRAG Picnic Area has been suggested as a potential LGS in the Seend Parish Neighbourhood Plan. The Plan consultants have advised that the space is not a typical strong contender for designation, as it is surrounded by open countryside and does not well fit criteria C above.

Melksham Without Parish Council support the potential designation of this locally valued space, and many of the people who use and value the space are Bowerhill residents. Melksham Without Parish Council are now working with the Seend Parish Neighbourhood Plan Group to collect local evidence to satisfy criteria B above. Items have been placed on social media and in the local news asking people to submit their support for designation referring to the qualities in B above.

This evidence will be part of the Seend Parish Neighbourhood Plan evidence base. It will be ultimately up to the independent Examiner on the Plan to use the evidence submitted to decide which spaces should be designated LGS in the Neighbourhood Plan.

Melksham Area Board Health and Wellbeing Group

Note of meeting held at the Town Hall on Thursday 1st August 2019

Introductions:

Councillor Pat Aves, Melksham Area Board/ Melksham Town Council (Chairman)

Julie Brown, Healthwatch Wiltshire

Sue Brown, Healthwatch Wiltshire Volunteer/ Melksham Town Council

Jon Berridge, Carers Support Wiltshire

Martin Elson, Contact the Elderly/ Art House Cafe

Chris Pickett, Melksham Older Persons Champion/ Mens Shed

Sheila Pickett, Melksham Dementia Friends Champion

Matt Billingham, Melksham Local Area Co-ordinator, Wiltshire Public Health

Becca Higgs, Healthier Communities Project, Wiltshire Council

Debbie Bentley, Community Engagement Officer, Melksham Town Council

Peter Dunford, Community Engagement Manager, Wiltshire Council

Apologies: Councillor Martin Pain, Melksham Town Council/ Seniors Forum

Ruth Randall, BoA and Melksham Health Partnership

Sue Mortimer, Melksham Community Meals

George Brown, Melksham Community Transport

Louise Clapton, Dorothy House Hospice Care

Emily Edwards, Health Trainer

Paul Bentley, Repair Academy

Project Updates

Peter Dunford explained that the HWG had not met for several months due to a changeover in staffing. Whereas the group had previously met mostly to consider funding bids to the Area Board, the Chairman had now agreed to a wider remit for the HWG, to monitor the range of health and wellbeing issues and projects locally and to look at gaps in provision and opportunities for collaboration. Working in this way, the HWG would be able to better target its limited revenue funding of £ 7,700 per annum and, where more appropriate, access to its capital funding of £ 48,511 in 2019/20.

Healthier Communities:

Becca Higgs described the Sport England funded 3 year initiative that aims to increase physical activity amongst residents aged 16- 74 years, who currently do less than 30 minutes activity per week. The project is targeted at some of the more deprived housing estates in the town at Forest, Berryfields and Queensway.

Free and low cost activities include:

Walking Netball on Mondays at River Mead School

This Girl Can (female only sessions) on Wednesdays at the Scout Hut

Led walks on Fridays from the Forest Community Centre

Walking Football coming soon to River Mead School

Boot Camp coming soon to Forest Community Centre

Seated sports coming soon (venue TBC)

The aim is to spread the word about these opportunities and to encourage a wide range of residents and community groups to engage in these physical activities. The Multi Faith Forum has already signed up to participate and the Seniors Forum is another group that would like to get involved.

ACTION: Follow up interest from the Seniors Forum in walking sports and table tennis at the Riverside Club

“Recycle Wiltshire” bike project:

Debbie Bentley (on behalf of her husband Paul) described a 6 week project organised by the Repair Academy (based in Calne) but to be delivered in community venues in participating towns. Designed for groups of 6 – 10 people aged 14+ the sessions will cover how to build a bike from its parts. The course will start with all bikes in a dismantled state. Each week the students will learn about the parts and how the bike is constructed. They will also learn about maintaining the bike as they put it back to its original state. On the 6th session, once all bikes are fully restored and in full working order they will take their Cycling Proficiency test, ensuring that they are safe to ride on the public highways. Students get to keep the bike along with a helmet and lock!

Beneficiaries of a more active lifestyle could include the unemployed, isolated adults, young offenders etc. 4 schools have already signed up to run the project.

Recycle Wiltshire is being trialed in Calne and Trowbridge and discussions have been held with a view to bringing this project to Melksham in Autumn 2019. Funding bids have been made to the Town Council and the Area Board for consideration in September towards course costs of £3,900. The project

could be linked to the Healthier Communities project and could be funded, in full or in part, through the Area Board Local Youth budget which has a larger revenue fund of £20,753 in 2019/20.

Make a Friend, Be A Friend:

Jon Berridge reported back on an initiative led by Carers Support Wiltshire and funded by the Melksham Area Board in 2018/19 as part of a wider project that has also included Trowbridge and Corsham.

The Make a Friend, Be a Friend project (MFBF) aims to connect residents who may be lonely or isolated with local organisations and groups which can offer support or social inclusion. The key audience is older people who may be feeling lonely and/or isolated and this may or may not include those who are also carers. The project reaches out to local communities by advertising a new telephone service via residential mailings, posters in key venues (e.g. Libraries and GP surgeries) and through personal referrals (e.g. GPs). This approach was chosen as the audience are less likely to use the internet. Callers were asked about their interests and the issues causing or adding to their isolation. People were matched to local community groups, clubs and support services who have signed up to the project. Mailings went out door-to-door across the whole town of Melksham in January and February 2019.

Community groups were asked to commit to:

- call those who have expressed an interest in their group or activity, to ensure they can support and encourage the first visit, and to check that both parties have all the information that they need;
- provide contact details and commit to respond to any new enquiry within 1 week of notification;
- provide feedback after the project has been running for a while, to ensure we capture successes and key learnings.

Outcomes:

- Referrals - 37 total / 15 Melksham
- Sign-postings – 57 total / 18 Melksham
- Groups - 43 total / 20 Melksham
- Callers - 27 total / 10 Melksham

The project has been the most successful in Melksham where there was a longer lead in time and two separate launches made. Groups were also signed up to the “Make Someone Welcome Campaign” by WCIL. The

response rate for the postcard – which has been the main form of promoting the programme - has been very disappointing and is clearly not working. However, the response from groups and people who have called is very positive, so CSW would like to keep the phone number going and find other ways of promoting the service such as working 1:1 with clients (e.g. LACs / HTs / Care Co-ordinators / Churches / other social prescriber roles etc). Other communication channels discussed included a calendar to keep on the fridge; GP messaging services; inserts with WC documentation such as Council Tax and bin collection leaflets; regular pieces in the Melksham Independent News and parish newsletters; also in magazines from statutory authorities such as Wessex Water and Selwood Housing/ Green Square/ Sovereign housing associations; and through other door to door services.

ACTION: PD to provide contacts for the Melksham News and parish newsletters

Local Area Co-ordination:

Local Area Coordination is a long-term evidence-based approach to support people in their local community. Local Area Coordinators will support people to obtain information, make practical and local connections and live the life they would like. We do this by taking time to get to know people, their families and carers, helping to identify people's strengths, skills, talents and abilities. In short, we will take the time to get to know people and build a trusting relationship. We will support people of all ages (including disabled people and people with mental ill-health), their families and carers to:

- Access information, advice and support at the right time
- Stay strong, be heard and in control
- Develop plans for how they would like their life to be
- Build their own local networks
- Find practical ways to resolve problems
- Become more connected and more actively involved in their communities
- Identify their personal strengths and goals

Local Area Coordination is free, supporting non-service solutions wherever possible. There are no assessments, referral processes or time limits – and we can meet people in local community settings or where they live, work or learn.

Matt Billingham reported that he now has a case load of 35 clients and is supporting these individuals through a range of issues which include: accommodation, Universal Credit, family breakdown, social isolation, mobility, food poverty and money issues. He is signposting clients for specialist support from a range of professionals such as GPs, dementia advisers and training agencies.

Dementia Friendly Communities:

Julie Brown from HealthWatch Wiltshire presented the findings of a recent report which shows that Wiltshire is a dementia friendly community which is greatly valued by those living with the condition and their carers. The report [How Dementia Friendly is Wiltshire?](#) gathered the views and experiences of more than 100 people in the county who are affected by dementia focuses on two elements: how local dementia friendly initiatives are working to make their area more dementia friendly; and how much those living with dementia feel they benefit from them.

HWW visited 15 community groups across Wiltshire and invited people to take part in a survey or a 1:1 interview to gather their feedback. Two thirds of people living with dementia and their carers (66%) reported that their community is dementia friendly and they feel a part of it. People also said they valued greater dementia awareness, understanding from others, and community groups that they could get involved with. The attitude of others in helping people to feel included, understood and given support was seen as more valuable than changes to physical environments to make them more dementia friendly.

The report shows that the effects of dementia friendly initiatives can be positive and wide-ranging, including improved physical and mental health, wellbeing, independence and community involvement. Those running dementia friendly initiatives said that they would like more support to publicise themselves so that people could find what help is out there for them more easily. Some initiatives said they needed more help to work better for the people they wanted to reach.

Some people said that there was still a need for more dementia awareness in their community, while many thought transport to enable more people to attend groups could be improved, particularly if they lived in a rural area or could no longer drive due to their dementia.

Sheila Pickett reported that the Dementia Action Alliance in Melksham was currently dormant due to volunteer fatigue. There had been little help forthcoming from the Dementia Friends regional office. Officers from HealthWatch Wiltshire offered to provide support. There remains interest in running dementia-friendly projects such as a church service, pantomime or film show locally.

Becca Higgs stressed the benefits of exercise and how the Healthier Communities project would like to support dementia-friendly initiatives in Melksham e.g. through walking sports activities.

Contact the Elderly:

Martin Elson reported that Melksham CTE is part of a national network (shortly to change its name) and runs very popular Sunday afternoon tea parties for their small group of elderly and isolated individuals. They are planning a canal boat trip from Devizes in August for a group of 8 individuals and their carers, for which they have received grant funding. The group is always on the lookout to recruit more clients. Care agencies such as Somerset Care and Mears Care, as well as Age UK and Carers Support Wiltshire were suggested as potential referral agencies.

Art House Café:

Martin Elson helps to run this community café on behalf of the Rotary Club of Melksham. They are a busy café with 2 paid cooks and a team of volunteers (more needed) running the operation between 9.30am and 3pm, Monday to Saturday. They host an Alzheimers Club on Monday afternoons and the premises are available for use by other charitable groups after 3pm. Owing to its success, the kitchen now requires an upgrade. The landlord (Melksham Town Council) has agreed to fit a new 3 phase electricity supply and grant applications are also being prepared for a new kitchen and front door.

Leg Club:

Ruth Randall was unable to attend but had sent a case study (attached) of the very successful Melksham Leg and Wellness Club held at the Spencer Moulton Sports centre on Thursday mornings.

Any Other Business

Sue Brown reported that she had not been included on the meeting invitation list this time and would like to be involved in future meetings in her role as a Healthwatch volunteer.

Future meetings

It was agreed to hold future meetings on an approximate quarterly basis to update on issues and projects and to consider any applications for funding to the Melksham Area Board Health and Wellbeing budget. Next meeting Autumn 2019, date to be advised in due course.

Note taken by Peter Dunford

WILTSHIRE POLICE

CPT Melksham Briefing

Wiltshire West Community Policing

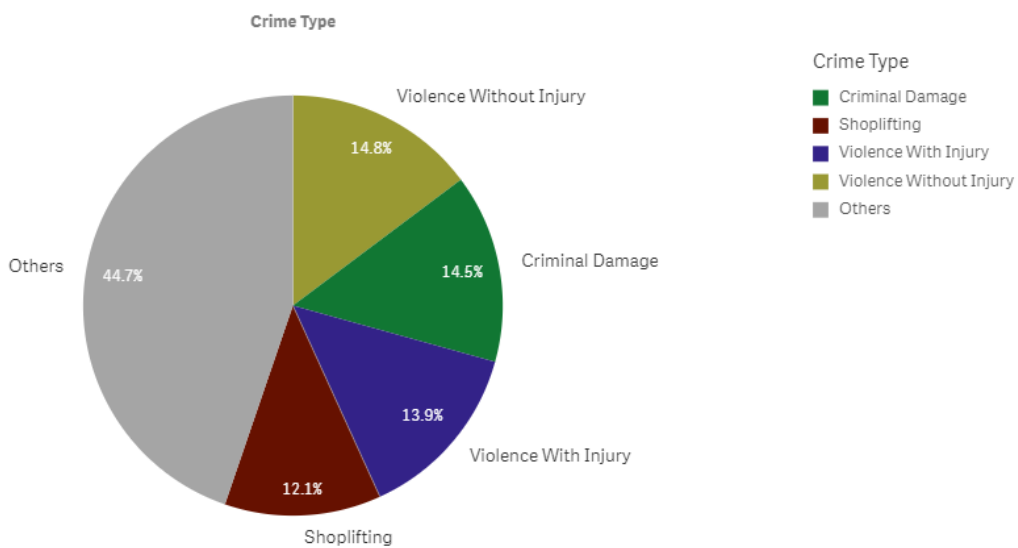


Proud to serve and protect our communities

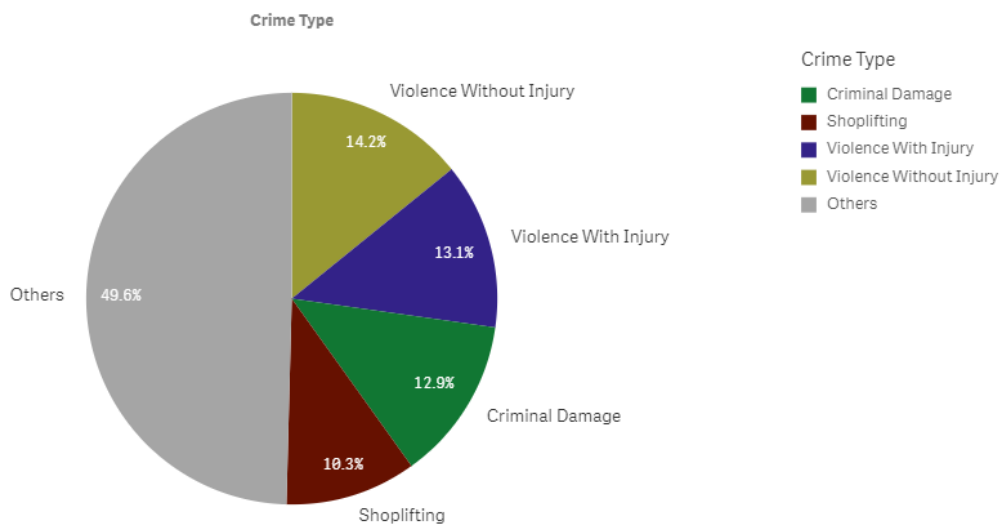
September 2019

PERFORMANCE

Your Area - Five Highest Crime Groups (Previous 12 months)



Force Area - Five Highest Crime Groups (Previous 12 months)



Wiltshire West CPT - crime and incident demand for the 12 months to July 2019

WILTSHIRE POLICE

CPT Melksham Briefing

Wiltshire West Community Policing



Proud to serve and protect our communities

September 2019

Force-wide

- Wiltshire Police has reduced the volume of recorded crime by 1% in the 12 months to July 19 and continues to have one of the lowest crime rates in the country.
- Our service delivery remains consistently good.
- In July, we received 9,653 999 calls which we answered within 4 seconds on average and 14,474 101 calls which we answered within 1 minutes 44 seconds on average.
- In July, we also attended 1,862 emergency incidents within 10 minutes and 49 seconds on average.
- Wiltshire Police has seen a 26% reduction in vehicle crime and 20 per cent in burglary in the 12 months to June 2019. These are the most improved trends in the country.
- The Crime Survey of England & Wales recently ranked Wiltshire as one of the top forces nationally for public confidence. It covers the 12 months to December 2018 The publication can be found here: WWW.CRIMESURVEY.CO.UK

For more information on Wiltshire Police's performance please visit:

PCC's Website - <https://www.wiltshire-pcc.gov.uk/article/1847/Performance>

HMICFRS Website - <https://www.justiceinspectorates.gov.uk/hmicfrs/police-forces/wiltshire/>

Police.uk - <https://www.police.uk/wiltshire>

WILTSHIRE POLICE

CPT Melksham Briefing

Wiltshire West Community Policing

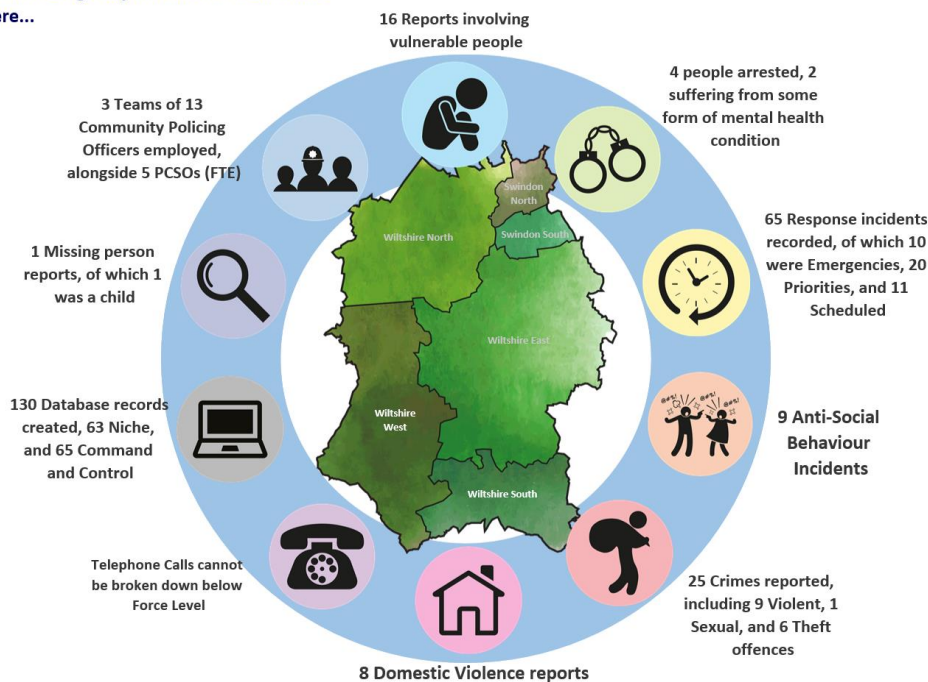


Proud to serve and protect our communities

September 2019

Area specific

On an average day in Wiltshire West there were...



Wiltshire West CPT Demand Overview – 12 months to July 2019

CRIME TRENDS - Melksham Town and Villages combined (Area Board)

Melksham Area Board includes 3 Beat Areas, 1 for the Town (ED11), and two for Rural and Villages (ED12) and (ED13).

Please note at time of writing August month end data is not available

ED11 – Melksham Town

July showed 102 crimes for the beat area against the average of 89.4 offences for this same month over the last two years. There are no exceptions within the data.

ED12 – Shaw, Whitley, Atworth, Broughton Gifford, Beanacre, Bowerhill and Berryfields

July showed 48 reported crimes for the beat area against the average of 34.5 offences for this same month over the last two years. There are no exceptions within the data.

ED13 – Seend, Bulkington, Poulshot, Keevil, Semington, Great Hinton and Steeple Ashton

July showed 19 reported crimes for the beat area against the average of 12 offences for this same month over the last two years. There are no exceptions within the data

WILTSHIRE POLICE

CPT Melksham Briefing

Wiltshire West Community Policing



Proud to serve and protect our communities

September 2019

LOCAL CPT UPDATES:

Significant Crime Updates

LEEKES OF MELKSHAM, BEANACRE ROAD. A male suspect has been observed on CCTV stealing a Dyson vacuum cleaner from the store before driving away from the premises with a female in a Renault Clio. Police later received a report of the vehicle being driven dangerously. Officers located the vehicle parked up in a car park at Shearwater, near Warminster a few hours after the incident. A male and female were arrested on suspicion of theft and following a search of them and the vehicle, further arrested for possession of offensive weapons, possession of bladed articles and possession of an imitation firearm but later released and charged. Larissa LYDALL, 23, from Frome Road, Trowbridge was charged with theft, possession of an imitation firearm, possession of an offensive weapon and possession of a sharply pointed article. Ross FLEMING, 41, of Linnet Close, Melksham was charged with theft. Both will appear at Salisbury Mags on the 23rd August

WAVERLEY GARDENS, MELKSHAM. A 23-year-old man from Southwick was arrested after a vehicle failed to stop for officers along Snowberry Lane, Melksham. The vehicle is believed to have been involved in a number of thefts around the Melksham and Calne areas. Officers followed the vehicle as it travelled from the direction of Calne towards Melksham and a short pursuit was authorised. The vehicle was seen to drive the wrong side of the road at the Hampton Park roundabout and at excess speed before crashing on the canal bridge. A man was detained at the scene by officers and was arrested on suspicion of theft of a vehicle, failing to stop for officers and dangerous driving, and the vehicle was seized. Michael Kibble, 23, of Southwick, was released and charged with two counts of making off without payment, dangerous driving, driving whilst disqualified, failing to stop a vehicle when required by an officer, possession of a class B drug and using a vehicle without insurance. He is due to appear in Salisbury Magistrates Court on August 2. He was released with no further action in relation to the theft of a vehicle offence.

MELSKHAM RAILWAY STATION. A man was arrested after police were called to reports of someone with a knife at Melksham Railway Station on the 6th Aug at around 2.45pm about a man who had been acting in a threatening and aggressive manner and shouting at members of the public while waving a small knife around. Wiltshire Police officers attended the railway station and apprehended the man. A 44-year-old man from Devizes has been arrested on suspicion of affray and possession of a bladed article.

Superintendent Mark Sellers said: "These officers acted swiftly and bravely, putting themselves in potential danger to protect the public. "Thankfully nobody was injured and this incident was resolved safely – but we know it could have been a very different story. "I would also like to commend the members of the public who called us, providing us with a detailed description of the suspect, while keeping themselves and others safe."

The incident will now be investigated by British Transport Police and they have appealed for witnesses.

BYRON CLOSE, MELKSHAM. On the 6th Aug two men were arrested after officers spotted a suspected drugs deal take place in Melksham. Officers from the Dedicated Crime Team were in the Byron Close area of the town at around 1pm today when they saw an exchange take place between two people. A man was detained for a search to be carried out,

WILTSHIRE POLICE

CPT Melksham Briefing

Wiltshire West Community Policing



Proud to serve and **protect** our communities

September 2019

and a quantity of cash and a mobile phone with evidence to suggest class A drug supply had been taking place, was seized. The man, an 18-year-old from Chippenham, was arrested on suspicion of being concerned in the supply of class A drugs. Officers conducted further enquiries and then entered an address nearby where they located a quantity of individual wraps of drugs. The man was further arrested on suspicion of being concerned in the supply of class B drugs. The second man, an 18-year-old from Calne, was also searched and arrested on suspicion of being concerned in the supply of class A and B drugs. Both have since been release RUI (Under Police Investigation)

Local Community Issues

PCSO Steph HOLMAN is continuing to look at drug and ASB issues in the area of Union Street. She is currently engaging with the local community to listen to the issues, gather intelligence and establish a plan to tackle the concerns raised.

PCSO Maggie LEDBURY is overseeing the coordination pro-active Patrols of rural locations by the area officers. Recently there have been reports of poaching and criminal damage to farm and private land in the area of Steeple Ashton, especially Mudmead Lane and Sandpits Lane.

PCSO Maggie LEDBURY is also driving pro-active patrols at the Hornchurch play park in Bowerhill following reports that the play equipment has been damaged and slides have been stolen. We have widened patrols to include several play areas in communities around Melksham including the Splash Pad at King George V playing field

Other local News



WILTSHIRE POLICE

CPT Melksham Briefing

Wiltshire West Community Policing



Proud to serve and protect our communities

September 2019

YOUR CPT – Wiltshire West



Inspector Andy Fee

Sergeant Dan Green

Community Co-ordinators:



PC Charly Chilton (Trowbridge)



PC Helen Daveridge (Westbury, Warminster, Tisbury and Mere)



PC Lee Pelling (Melksham)



Pc Rich Salter (Tisbury and Mere)



Pc Darren Foulger (Bradford on Avon and Youth Intervention)

You can find out more about Wiltshire West CPT, including news stories and contacts for local officers, on our website: www.wiltshire.police.uk/WiltshireWest

WILTSHIRE POLICE

CPT Melksham Briefing

Wiltshire West Community Policing



Proud to serve and protect our communities

September 2019

LOCAL PRIORITIES

PRIORITIES FOR WILTSHIRE WEST CPT	UPDATE
Priority 1:	
<p><u>CSW - Community Speed Watch</u></p> <p>Every 2 weeks, 4 CSW Schemes across West Wiltshire are selected for CPT targeting, enforcement to supplement the CSW team planned sessions. The results are reported back to the CSW teams and local communities.</p>	<p><u>Current Speed Watch areas 14/08 date</u> Dilton Marsh, Westbury Bitham park, Westbury Steeple Ashton, Melksham North Bradley, Trowbridge</p> <p><u>Speed Watch areas 07/08-14/08:</u> Chitterne Shrewton Road Hilperton Trowbridge Road Maiden Bradley Frome Road Melksham/Berryfields Semington Road Results – 4 Tickets issues, 9 Cautions given. 1 driver reported for no insurance and driving licence.</p>
Priority 2:	
<p><u>Op Artemis – Rural Crime</u></p> <p>This is the ongoing rural crime operation overseen by the Rural Crime Team for the county. They will arrange for specific patrols during the course of the year in cooperation with and supported by the farming community with a view to tackling, deterring and detecting overnight rural crimes.</p>	<p>Many pro-active patrols are being carried out in rural locations across West Wiltshire, with a focus on the areas of Steeple Ashton, Stockton and Chilmark specifically.</p>

WILTSHIRE POLICE

CPT Melksham Briefing

Wiltshire West Community Policing



Proud to serve and protect our communities

September 2019

Priority 3:

Young people involved in ASB and criminality (Warminster and Westbury town centre).

A small group of young people within the Warminster and Westbury area have been involved in Antisocial Behaviour, and criminality recently.

Pro-active patrols are being conducted in key locations in Warminster and Westbury. A section 35 dispersal Order was in place for 3 days (1st to the 3rd Aug) in Warminster town centre to prevent more than 2 youth gathering.

Multi agency intervention work including YOT (Youth Offending Team), Wiltshire Council, schools and Housing associations where relevant will take place with any youths identified as causing issues, ASB or crime.

Priority 4:

Young people in Melksham involved in ASB and criminality

In May a disorder was reported in the Hawthorn Road area of Melksham, which involved a large group of youths.

UPDATE Enquiries are complete and the file will be sent to CPS in relation to potential charges or summons to be brought.

Youth intervention officer Pc Darren Foulger continues to work closely with some of the key youths and their families alongside partner agencies to prevent further instances occurring

WILTSHIRE POLICE

CPT Melksham Briefing

Wiltshire West Community Policing



Proud to serve and protect our communities

September 2019

HIGH LEVEL PCC UPDATES

- **Pay increase** - Police Officers are to receive a 2.5% pay increase as agreed by the Government. This is welcome news and well deserved, I only hope that the same increase is also afforded to police staff as well. However, it is expected that we will have to meet this increase from existing Wiltshire Police budgets and that no further funding will come from the Government to fund this rise, which is disappointing and I continue to lobby the Government for fairer funding in Wiltshire.
- **PCSOs** - Last month Wiltshire Police Federation, which represents police officers within the Force, wrote an open letter suggesting that the Force should 'axe PCSOs' and recruit police constables instead. Both the Chief and I strongly refuted this suggestion. We both recognise the key role that PCSOs play in community engagement, intelligence gathering and supporting the most vulnerable. The role of a PCSO is a completely different one to that of a police constable and they play a key role in our community policing teams.
- **Additional police officers** - I was pleased to hear the new Prime Minister's commitment to policing and his promise of 20,000 additional police officers in the next three years. We don't know what this will look like in terms of how many more we will get in Wiltshire but I trust that more detail will soon be forthcoming. I do have some concerns around the practicalities of recruiting so many officers in such a short period of time and it certainly won't happen overnight, with it taking around a year to recruit and train an officer before they're able to go on the beat, but his commitment to strengthening our police forces is welcome nonetheless.

HIGH LEVEL FORCE UPDATES

- **Youth crime** – A Government report into the increase in youth violence has been welcomed by the Force. Chief Constable Kier Pritchard has said that although there hasn't been a significant increase in Wiltshire, it is still a concerning issue for local people. He is calling for a multi-agency approach and focused on the need to engage with young people to help prevent them from falling into a life of crime.
- **Rural crime** – Wiltshire has bucked the national trend when it comes to rural crime, recording a 36% year-on-year drop when it comes to the amount of money this type of crime is costing people in the county. This is believed to be due to the focus our Rural Crime Team has placed on crime prevention advice, including the

WILTSHIRE POLICE

CPT Melksham Briefing

Wiltshire West Community Policing



Proud to serve and protect our communities

September 2019

encouragement of CCTV, anti-poaching ditches and the installation of GPS trackers on equipment.

- **Domestic abuse** – As part of our Summer Demand campaign, we have been focusing on highlighting the important topic of domestic abuse and making sure victims know how to access the support available. There is also a focus on encouraging friends and neighbours to report concerns to the police. You can read more online: <https://www.wiltshire.police.uk/article/4820/VIDEO-What-to-do-if-you-have-concerns-your-neighbour-is-being-abused-by-a-partner>

GET INVOLVED

- You can keep up to date with the latest news in your area by signing up to our Community Messaging service – www.wiltsmessaging.co.uk
- You can follow your CPT on social media <https://www.wiltshire.police.uk/Followus>
- More information on your CPT area can be found here: www.wiltshire.police.uk and here www.wiltshire-pcc.gov.uk

OTHER NEWS

NATIONAL FIREARMS SURRENDER

More than 190 items were handed into Wiltshire Police during the National Firearms Surrender.

The two-week surrender finished on Sunday (4 August) with 65 firearms, 24 flares and 21 rounds of ammunition being handed in.

The firearms surrendered included: air rifles, a deactivated AK-47, shotguns, BB guns, starter pistols and a Mauser Machine Pistol. There were also two First World War bolt-action rifles and even a few even older muzzle-loading rifles.

The surrender also saw members of the public handing in items that could be considered dangerous in the wrong hands, including 82 knives, two pepper spray canisters, mace spray and black powder propellant.

WILTSHIRE POLICE

CPT Melksham Briefing

Wiltshire West Community Policing



Proud to serve and protect our communities

September 2019

Inspector Paul Saunders, said “I would like to say thank you to those members of the public across Wiltshire and Swindon, who have surrendered items during the past two weeks.

“Wiltshire continues to be one of the safest counties to live in the country, and thankfully incidents involving firearms remain low.

“Overall, we have had a really positive response from the public and it means there are 65 less unwanted firearms and unlicensed firearms in our community.

“As well as asking people to consider surrendering their firearms, it has given us an opportunity to talk about them.

“Wiltshire is largely a rural county, we know there are people who legally own or collect firearms, so during these two weeks we have been appealing to them to think about the safety of their guns. How they store them, who could have access, where they are using them and how they are transporting them.

“The items handed in during the surrender have demonstrated how air guns, something you do not ordinarily require a license for, are designed to look very similar to live firearms and, if not handled carefully or seen by the public, could trigger a full police firearms response.

The majority of firearms collected will be destroyed. However, some will be kept for training purposes and other antique items are likely to be passed to museums for them to display.

Inspector Saunders added: “Although this firearms surrender has now finished, I would like to remind members of the public that guns, knives and ammunition can be handed in at police enquiry offices at any time.

“Many firearms are held without awareness of their legality or may be overlooked or forgotten in people’s homes. I would urge the public that if you are not using your firearm, or if you have found an old one when tidying out the loft or shed, please take responsibility and safely dispose of it by handing it in to us.

“Firearms can have devastating consequences in the wrong hands, whether that is the hands of criminals, children, or vulnerable people”.

If you know of people involved in illegal firearms activity call the police on 101, or Crimestoppers on 0800 555 111. In an emergency, always call 999.

Every call to Crimestoppers is anonymous and potentially vital to preventing or solving serious crimes; removing an illegally held firearm may just save someone’s life.

Melksham Area Board Report – 3rd September 2019

Barbecues



Barbecues are great when the sun is shining and you have friends and family to visit, but they do carry a fire risk.

- Always position the barbecue on a level site, away from wooden fencing, sheds and hedges.
- Don't place the barbecue on dry grass or vegetation.
- Use firelighters or barbecue fuel to light the coals – NEVER use petrol or paraffin.
- Keep children and pets well away from the cooking area and never leave the barbecue unattended.
- Be careful when grilling fatty foods, as the fat can cause the coals to flare up.
- Don't move the barbecue until it is completely cool, and make sure any remaining charcoal is cold before disposing of it carefully. Ideally use water to damp down the ashes.
- If using a disposable barbecue, make sure it is completely cold before disposal.
- NEVER dispose of hot barbecue ashes in plastic rubbish bins as this can easily start a fire.
- Always have a bucket of water or garden hose to hand in case a barbecue gets out of hand.
- Make sure the controls and cylinder valves of a gas barbecue are turned off before you change the cylinder, which should be done in a well ventilated area. Always check the connections for leaks.

- Store gas cylinders outside and protect them from direct sunlight and frost.
- Make sure your gas barbecue is correctly serviced and that all joints are tightened, safe and secure.
- Never use a barbecue indoors or inside a tent, as they produce potentially lethal carbon monoxide.

Heath fires and countryside safety



When you are out and about enjoying the countryside, there are some things you can do in order to protect our beautiful surroundings and keep you safe.

Large wildfires are thankfully rare but, when they do occur, they can be very serious and affect large areas of the countryside. They also take a great deal of resources to bring under control, which impacts the availability of appliances for property fires and other emergencies.

The Upton Heath fire in Dorset in 2011, for example, damaged approximately 250 acres of the heath and required the mobilisation of 30 fire engines and 11 Land Rovers.

Wildfires can ravish the local wildlife, destroying ecosystems in a matter of hours that have taken years to build up. If a wildfire encroaches upon farmland, then crops and farm buildings can be consumed, and homes that border heathland can also be at risk.

At their worst, wildfires can cause death or injury to people. A developed wildfire creates its own wind, which drives it at speeds faster than people can get out of its way.

Steps you can take to avoid starting a wildfire:

- Avoid open fires in the countryside. If you must have a fire, make sure that you're in a designated safe area.
- Put out cigarettes and other smoking materials properly before you leave your vehicle.
- Do not throw cigarette ends out of your vehicle. They could start a fire and destroy surrounding countryside.
- Don't leave bottles or glass in woodlands, as sunlight shining through the glass can cause a fire to start. Take the items home, or put them in a waste or recycling bin.
- If you see a fire in the countryside, report it immediately. Do not try to tackle a fire yourself; usually they can't be put out with a bucket of water. Please call the fire service and leave the area as soon as possible.
- Ensure that you know your location or a landmark so you can direct the fire service.

Safe and Well Visits- Home safety

The Melksham area has a dedicated Fire Service '**Safe and Well**' advisor who can visit people, within their own homes, advising on home safety and wellbeing.

A Safe and Well visit is **FREE** and normally lasts about one hour covering topics such as:

- Using electricity safely
- Cooking safely
- Making an escape plan
- What to do if there is a fire
- Keeping children safe
- Good practice – night time routine and other points relevant to you
- Identifying and discussing any further support the occupier may need

If you have thatch property, are living alone, have a young family, are over 65 or a smoker please get in contact with us. We want to help make you safer in your own home. If you or someone you know has mobility or sight and hearing impairments, please suggest a Safe and Well visit.

Visit <http://www.dwfire.org.uk/news/new-name-new-contact-details-same-service/> to book one.

Response

Total Incidents attended by DWFRS for Melksham Area; 27/07/19 – 27/08/19.

DWFRS have responded to 30 incidents in the Melksham area between the dates above.

Melksham Fire Station Responded to a total of 30 incidents County wide in the mentioned time period. Details are listed in the table below.

Category	Incidents in Melksham	Off of Station Ground incidents	Total
False Alarm	12	0	12
Fire	8	0	8
Other	10	0	10
Total	30	0	30
Pump Availability	42.2%		

Recent Notable Incidents

The crew from Melksham have been involved in a rescue of a man from a stream, suffering hypothermia, numerous RTC's including one LGV and Car. They have also attended a number of fires, mainly consisting of small kitchen/cooker fires.

Community Engagement

Dorset & Wiltshire Fire and Rescue Service provides a free service called a Safe and Well visit. We will visit a person's home by appointment and discuss any safety issues in the home. We will also have a conversation about improving an individual's health and well-being.

If you or someone you know need a smoke alarm, some advice or are worried about what to do in an emergency, contact us for a free Safe and Well visit;

<http://www.dwfire.org.uk/safety/safe-and-well-visits/>

Community Safety Plan

DWFRS Community Safety Plan 2018-2022 outlines our plans for the future. It explains the diverse services we provide and how we plan to improve and deliver them over the four-year period. The plan can be found on the DWFRS website <http://www.dwfire.org.uk/community-safety-plan/>



Phil People

Station Manager, Wiltshire West. Trowbridge, Bradford, Melksham & Devizes.

Email: phil.people@dwfire.org.uk

Tel: 07787862767 / 01722 691247

www.dwfire.org.uk

July 2019

The right healthcare, for you, with you, near you

NHS Wiltshire Clinical Commissioning Group (CCG) is responsible for commissioning a broad range of healthcare for the population of Wiltshire. We are led by experienced local GPs drawn from across the county, who provide clear clinical leadership to the big decisions affecting the future of healthcare provision in Wiltshire, carefully tailored to meet the differing needs of people locally.

Our vision is to ensure the provision of a health service which is high quality, effective, clinically-led and local. We are committed to delivering healthcare that meets the needs of Wiltshire people, to consult and engage with our population to enable them to be involved in decisions made about health services and to deliver those services to people in their own homes or as close to home as possible.

News

CCGs to apply to merge

As you know, we have formed a Commissioning Alliance with BaNES and Swindon CCGs, with one Chief Executive and senior management team across the three organisations, whilst retaining the three separate organisations each with their own Governing Body. The NHS Long Term Plan sets out an expectation for CCGs to officially merge, and for Wiltshire CCG this means merging with BaNES and Swindon CCGs to become one commissioning organisation before April 2021.

On 12 June 2019 the three Governing Bodies took a consensus view that there is now a strong case supporting a full CCG merger. At their recent public meetings, each Governing Body has now approved the proposal to apply to merge.

Prior to submitting the application the CCGs will engage with stakeholders, and the GP membership of each CCG will then vote on a final decision to apply for a merger.

A detailed application to merge needs to be submitted to NHS England by 30 September 2019 to have the full merger in place by April 2020.

We will continue to provide you with updates on the process in the coming months.

Primary Care Networks

Primary Care Networks came into effect on 1 July 2019 and there has been a lot of work going on behind the scenes to form the GP networks and get the appropriate structures in place.

It will take some time for the networks to become fully operational and for patients to start seeing the benefits of this collaborative provision of services.

Clinical directors have been appointed for all 11 networks in Wiltshire with some networks choosing to make this a shared role.

Name of PCN	Practices in PCN	Clinical Director
Calne	Patford House Partnership Northlands Surgery Jubilee Field Surgery	Dr Julia Dalton – Northlands Surgery Dr Kathryn Hughes – Patford House Partnership
Chippenham, Corsham and Box (CCB)	Hathaway Surgery Rowden Surgery Lodge Surgery Porch Surgery Box Surgery	Dr Philip Grimmer – Hathaway Surgery
East Kennet	KAMP Ramsbury Surgery Burbage Surgery Old School House Surgery	Dr John Williams - KAMP Dr Graham Muller – Ramsbury Surgery Dr Anne Woods – Old School House Surgery
North Wilts Border	Malmesbury Medical Partnership Tolsey Surgery Purton Surgery Tinkers Lane Surgery New Court Surgery Cricklade Surgery	Dr Ravi Gonsalves – New Court Surgery Dr John Pettit – Malmesbury Medical Partnership Dr Chris Philips – Malmesbury Medical Partnership
Sarum South	Downton Surgery Harcourt Medical Centre Salisbury Medical Practice Whiteparish Surgery Three Chequers Medical Practice	Dr Judy Walters – Three Chequers Medical Practice
Sarum North	Barcroft Medical Centre Castle Practice Avon Valley Practice St Melor House Surgery Cross Plains Health Centre Millstream Medical Practice	Dr Lucy Davies – Castle Practice
Sarum West	Sixpenny Handley Surgery The Orchard Partnership Tisbury Surgery Mere Surgery Silton Surgery Hindon Surgery Courtyard Surgery	Dr Fiona Dawe – Hindon Surgery

Devizes	Market Lavington Surgery Lansdowne Surgery St James Surgery Southbroom Surgery	Dr Ian Williams – Southbroom Surgery
Melksham and Bradford on Avon	Giffords Surgery Spa Medical Centre Bradford on Avon and Melksham Health Partnership	Dr Jonathan Osborn – Giffords Surgery
Trowbridge	Lovemead Group Practice Trowbridge Health Centre	Dr Lucy Thompson – Lovemead Group Practice Dr Stephen Locke – Trowbridge Health Centre
Westbury and Warminster	The Avenue Surgery White Horse Health Centre	Dr Lisa Hirst – The Avenue Surgery

Our Health Our Future – engagement to support BSW five year plan

The Our Health Our Future campaign is underway – asking local people what is important to them for their health and care, now and into the future. All responses to the survey will feed into our local five year plan.



You can go to www.ourhealthourfuture.org to complete the survey and to find out more.

We would appreciate your support in encouraging your family, friends and the people in your communities to take part in the survey to help shape the future of health and care across B&NES, Swindon and Wiltshire.

The survey closes on 31 July 2019.

Governing Body meeting

Our next Governing Body meeting is on 23 July 2019 at 10.00am at Southgate House, Pans Lane, Devizes SN10 5EQ. You can read the papers from previous meetings on our website www.wiltshireccg.nhs.uk/governance/governing-body-meetings-in-public

News archive

Read more news from Wiltshire CCG in our [news archive](http://www.wiltshireccg.nhs.uk/news/news-archive) – www.wiltshireccg.nhs.uk/news/news-archive.

Keep up to date with news and information from Wiltshire CCG on social media.



NHS Wiltshire CCG



@NHSWiltshireCCG

Wish lists for health and care services in BaNES, Swindon and Wiltshire revealed

Hundreds of people in Bath & North East Somerset, Swindon and Wiltshire have shared their views on how to improve NHS health services where they live.

Increasing the use of technology for booking appointments and data sharing between health services; helping people lead a healthier lifestyle to prevent illness; shortening waiting times for access to GP appointments; and for health professionals to have a better understanding of long-term health conditions, such as autism, were some of the themes that emerged from people in the region.

Their views were shared as part of the Healthwatch #WhatWouldYouDo? campaign and the findings are revealed in a new report.

Nearly 700 residents, patients and their families took part in 'What Would You do?' activities, which launched in March to encourage people in the region to share their views about how extra money from the Government should be spent on local NHS services.

The public were asked to give their views about how local services could improve, and to share ideas about how the NHS can help people live healthier lives and take more control of their care.

Stacey Plumb, Manager at Healthwatch Wiltshire, said: "The Government is investing an additional £20 billion a year until 2023 in the NHS as part of the NHS Long Term Plan. We were asked to help find out what local people thought was the best way for the NHS in Bath & North East Somerset, Swindon and Wiltshire to invest in the right services as part of this plan.



"It was wonderful to listen to so many people keen to make a difference in our local NHS. These views are all in the report and we will now monitor how the local NHS responds."

Dr Ian Orpen, Chair of the BaNES, Swindon and Wiltshire Clinical Board, said: "It's clear that local people have strong views about how health and care services should be organised in the future. We will listen to them and make sure we address their concerns as we draw up plans for how we organise services over the coming years."

The report is being shared with the local NHS and can be viewed on our website.

MELKSHAM & DISTRICT SENIORS FORUM 55+

2ND QUARTER UPDATE REPORT TO MELKSHAM AREA BOARD

Forum 55+ has settled into its new routine where its elected Executive Committee members each have a portfolio giving them responsibility over individual activities and events presented by The Forum. Each of these activities is designed to provide a socialization channel for our members. These are

1. The Monday Club at Forest Community Centre where we provide the opportunity for members to meet, chat, take part in appropriate activities and generally absorb a convivial social atmosphere.
2. The Thursday Club at The Riverside Club where we present a wide range of activities from chair aerobics, tai chi, sing-a-longs, topical presentations on issues of interest to our membership. This town centre activity provides a great opportunity for members to socialize and exercise.
3. The Film Club at The Assembly Hall where we screen a menu of films chosen by our membership.
4. Christmas Party at The Assembly Hall – plans for this years party are well advanced and the event promises to provide a great seasonal party experience for our members.
5. The on-going Socialize 'n Shop program is very successful. We continue to receive new applications for membership by business and individuals. There are now over 200 card carrying high street shoppers.
6. Once the Canberra Youth Centre refurbishment program is complete we hope to commence our intergenerational activities with their membership.
7. Coach Tours under the auspices of Forum 55+ will re-commence in the New Year.

Our new website will soon burst upon the Internet showcasing all our activities and inviting new ideas from the people of Melksham

We continually search for new and interesting activities for the members and are seriously examining ways and means to increase both the service range and frequency. It is our intention to develop and take on a greater role as advocates for the needs and wellbeing of Melksham's older citizens which will take us back to one of the Forum's foundation principles. One avenue we are pursuing is active cooperation with the Area Board in developing the vision for Age Friendly Melksham. Another avenue is to seek partnership and affiliation with

other local and regional groups that have similar aims and objectives. We continue our representation on the Management Committee of South West Seniors Network and are send representatives to many other groups

Our constantly expanding Forum now needs to enlarge its cadre of volunteers so we are reaching out to those in our community who have the time and interest to join our team. We also have a vacancy on our Executive Committee so would welcome someone with vision, imagination, commitment and energy.

Finally we have to record our sincere thanks to local businesses; Asda, Sainsbury's, Waitrose and many others for their generous support. We must also register our gratitude to our local councils for their grant awards. Without this valuable support from our community Forum 55+ would not be able to provide services to our membership. Thank-you Melksham.

MARTIN PAIN

CHAIR

List of Grant Applications for Melksham Area Board – 3rd September 2019

Capital Funding			
Applicant	Project summary	Requested from Area Board	Total required
Grant ID: 3323 Applicant Name: Community Emergency Group	Project Title: Walkie Talkies for Community Emergency Group Shaw Whitley The Community Emergency Group CEG has existed for over 4 years and we have an active group of about 25 volunteers. We have been advised that walkie talkies would be beneficial in the event of an emergency. The Reading Rooms Whitley is our control room. We need to locate 10 walkie talkie units in a cupboard and maintain the units on trickle charge. This necessitates a 13-amp socket, also there is a need for an antenna to be fitted to the chimney with associated lead can be connected to the master walkie talkie used within the control room. This will ensure a signal will be available to volunteers within the confines of the 2 villages. Grant application link: Area Board Grant no 3323 http://thematrix.wiltshire.council/areaboard_grants/grant_detail.php?gid=3323	£320.54	£320.54

Remaining budget: £32,084.49

Total of current applications: £320.54

List of Grant Applications for Melksham Area Board – 3rd September 2019

Youth Funding			
Applicant	Project Summary	Requested from Area Board	Total Funding Required
<p>Grant ID: 725</p> <p>Applicant Name:</p>	<p>Project Title: Re-Cycle Wiltshire</p> <p>The Repair Academy is a financially independent project parented by Wiltshire Wildlife Trust working to help at-risk youth groups and school children develop experience and skills - providing opportunity and learning through accomplishing focused group activity. The Re-Cycle Wiltshire bike scheme gives small groups of young people access to an instructor-led bike rebuilding course and provides them with the tools and instruction to safely and professionally re-build their own bike which they can keep upon completion of the course.</p> <p>Grant application link: Area Board Grant no 725 http://thematrix.wiltshire.council/areaboard_youth_grants/grant_detail.php?gid=725</p>	£4,000.00	£4,000.00

Remaining budget: £14,759.33

Total of current applications: £4,000.00

CONFIDENTIAL

List of Grant Applications for Melksham Area Board – 3rd September 2019

H&WB Funding			
Applicant	Project Summary	Requested from Area Board	Total Funding Required
Grant ID: Applicant Name:	Project Title: Grant application link:		

Remaining budget: £6,765.28

Total of current applications: £

CONFIDENTIAL

Report to	Melksham Area Board
Date of Meeting	03/09/2019
Title of Report	Community Area Grant funding

Purpose of the report:

To consider the applications for funding listed below.

Applicant	Amount requested
Applicant: Community Emergency Group Project Title: Walkie Talkies for Community Emergency Group: Shaw and Whitley View full application	£320.54

1. Background

Area Boards have authority to approve Area Grants under powers delegated to them. Under the Scheme of Delegation Area Boards must adhere to the [Area Board Grants Guidance](#)

[The funding criteria and application forms](#) are available on the council's website.

2. Main Considerations

2.1. Councillors will need to be satisfied that funding awarded in the 2019/2020 year is made to projects that can realistically proceed within a year of it being awarded.

2.2. Councillors must ensure that the distribution of funding is in accordance with the Scheme of Delegation to Area Boards.

2.3. Councillors will need to be satisfied that the applications meet the Community Area Board grants criteria.

3. Environmental & Community Implications

Grant Funding will contribute to the continuance and/or improvement of cultural, social and community activity and wellbeing in the community area, the extent of which will be dependent upon the individual project.

4. Financial Implications

Financial provision had been made to cover this expenditure.

5. Legal Implications

There are no specific legal implications related to this report.

6. Human Resources Implications

There are no specific human resources implications related to this report.

7. Equality and Inclusion Implications

Community Area Boards must fully consider the equality impacts of their decisions in order to meet the Council's Public Sector Equality Duty.

Community Area Grants will give local community and voluntary groups, Town and Parish Council's equal opportunity to receive funding towards community-based projects and schemes, where they meet the funding criteria.

8. Safeguarding Implications

The Area Board has ensured that the necessary policies and procedures are in place to safeguard children, young people and vulnerable adults.

9. Applications for consideration

Application ID	Applicant	Project Proposal	Requested
3323	Community Emergency Group	Walkie Talkies for Community Emergency Group: Shaw and Whitley	£320.54
Project Description: The Community Emergency Group CEG has existed for over 4 years and we have an active group of about 25 volunteers. We have been advised that walkie talkies would be beneficial in the event of an emergency. The Reading Rooms in Whitley is our control room. We need to locate 10 walkie talkie units in a cupboard and maintain the units on trickle charge. This necessitates a 13-amp socket, also there is a need for an antenna to be fitted to the chimney with associated lead can be connected to the master walkie talkie used within the control room. This will ensure a signal will be available to volunteers within the confines of the 2 villages. The walkie talkies will enable volunteers to communicate with the control room in an emergency situation i.e. flooding ice snow etc. Currently volunteers use their own mobile phones which is very restrictive. Members of our community will receive support in the event of flooding at their homes.			
Input from Community Engagement Manager: This is an application to the community grants scheme for capital funding of £321 towards total project costs of £ 446. Other contributions include a grant of £75 from the parish council, £ 50 time donated in kind for fitting and installation, plus a further 8 hours volunteer contribution.			
Proposal That the Area Board determines the application.			

No unpublished documents have been relied upon in the preparation of this report.

Report Author:

Peter Dunford

Community Engagement Manager

01225 713060

Peter.Dunford@wiltshire.gov.uk

Grant Applications for Melksham on 03/09/2019

ID	Grant Type	Project Title	Applicant	Amount Required
3323	Community Area Grant	Walkie Talkies for Community Emergency Group Shaw Whitley	Community Emergency Group	£320.54

Submitted: 25/05/2019 13:05:36

ID: 3323

Current Status: Application Appraisal

To be considered at this meeting:

tbc contact Community Area Manager

1. Which type of grant are you applying for?

Community Area Grant

2. Amount of funding required?

£0 - £500

3. Are you applying on behalf of a Parish Council?

No

4. If yes, please state why this project cannot be funded from the Parish Precept

5. Project title?

Walkie Talkies for Community Emergency Group Shaw Whitley

6. Project summary:

The Community Emergency Group CEG has existed for over 4 years and we have an active group of about 25 volunteers. We have been advised that walkie talkies would be beneficial in the event of an emergency. The Reading Rooms Whitley is our control room. We need to locate 10 walkie talkie units in a cupboard and maintain the units on trickle charge. This necessitates a 13-amp socket, also there is a need for an antenna to be fitted to the chimney with associated lead can be connected to the master walkie talkie used within the control room. This will ensure a signal will be available to volunteers within the confines of the 2 villages.

7. Which Area Board are you applying to?

Melksham

8. What is the Post Code of where the project is taking place?

SN12 8QR

9. Please tell us which theme(s) your project supports:

Other

If Other (please specify)

COMMUNITY SUPPORT IN EVENT OF EMERGENCY

10. Finance:

10a. Your Organisation's Finance:

Your latest accounts:

12/2018

Total Income:

£195.00

Total Expenditure:

£181.00

Surplus/Deficit for the year:

£14.00

Free reserves currently held:

(money not committed to other projects/operating costs)

£0.00

Why can't you fund this project from your reserves:

CEG has no reserves. We did receive a grant of 175 from MwPC in May 2019 to acquire health safety equipment and money for a 5-year licence 75 to use walkie talkies.

We are a small community group and do not have annual accounts or it is our first year:

10b. Project Finance:

Total Project cost		£320.54		
Total required from Area Board		£320.54		
Expenditure		Income	Tick if income	
(Itemised	£	(Itemised income)	confirmed	£
expenditure)				
Walkie Talkies	106.99			
Antenna cable	115.50			
adaptors				
Twin socket cable	55.00			
conduit				
Chimney fixing kit-	23.05			
antenna				
Installation	20.00			
5-year licence	75.00	Grant from MwPC	yes	75.00
Fitting Installation	50.00	Fitting and	yes	50.00
in kind		installation in kind		

Volunteer time of
8hrs to make good yes 0.00
lockable cupboard

Total £445.54 £125

11. Have you or do you intend to apply for a grant from another area board within this financial year?
No

12. If so, which Area Boards?
Corsham

13. Please tell us WHO will benefit and HOW they will benefit from your project benefit your local community?
The walkie talkies will enable volunteers to communicate with the control room in an emergency situation i.e. flooding ice snow etc. Currently volunteers use their own mobile phones which is very restrictive. Members of our community will receive support in the event of flooding at their homes.

14. How will you monitor this?
All incidents will be logged and the equipment which will be kept in a locked cupboard will be inspected periodically and used in exercises.

15. Safeguarding. Please tell us about how you will protect and safeguard those involved in your project

16. If your project will continue after the Wiltshire Council funding runs out, how will you continue to fund it?
We have in the past received grants from SSE Resilience Fund £3000.00 in 2015 and £1500.00 in 2016 this money was used to purchase various items of equipment to deal with flooding ice snow. MwPC have also provided grants to support our work.

17. Is there anything else you think we should know about the project?

18. DECLARATION

Supporting information - Please confirm that the following documents will be available to inspect upon request:

Quotes:
Yes, I will make available on request 1 quote for individual project costs over £500 & 2 quotes for project costs over £1000 (Individual project costs are listed in the expenditure section above)

Accounts:
Yes, I will make available on request the organisation's **latest accounts**

Constitution:
Yes, I will make available on request the organisation's Constitution/Terms of Reference etc.

Policies and procedures:
Yes, I will make available on request the necessary and relevant policies and procedures such as Child Protection, Safeguarding Adults, Public Liability Insurance, Access audit, Health & Safety and Environmental assessments.

Other supporting information (Tick where appropriate, for some project these will not be applicable):

And finally...

Yes, The information on this form is correct, that any award received will be spent on the activities specified.

Report to	Melksham Area Board
Date of Meeting	03/09/2019
Title of Report	Community Youth Grants

1. Purpose of the report:

To ask Councillors to consider the following applications seeking funding from the Melksham Area Board.

Application	Grant Amount	
Applicant: Wiltshire Wildlife Trust Project Title: Re-Cycle Wiltshire	£4000.00	

2. Main Considerations

Councillors will need to be satisfied that grants awarded in the 2019/20 year are made to projects that can realistically proceed within a year of the award being made.

Area Boards have authority to approve Area Grants under powers delegated to them by the Cabinet member for Communities, Campuses, Area Boards, Leisure, Libraries and Flooding. Under the Scheme of Delegation Area Boards must adhere to the Area Board Grants Guidance 2019/2020.

Community Youth Grants will contribute to the continuance and/or improvement of cultural, social and community activity and wellbeing in the community area, the extent and specifics of which will be dependent upon the individual project.

Community Youth Grants give all local community and voluntary groups, Town and Parish Councils an equal opportunity to receive funding towards community-based projects and schemes.

3. The applications

Applicant: Wiltshire Wildlife Trust Project Title: Re-Cycle Wiltshire	Amount Requested from Area Board:	£4000.00
--	--	----------

This application meets the grant criteria for 2019/20.

Project Summary: The Repair Academy is a financially independent project parented by Wiltshire Wildlife Trust working to help at-risk youth groups and school children develop experience and skills - providing opportunity and learning through accomplishing focused group activity. The Re-Cycle Wiltshire bike scheme gives small groups of young people access to an instructor-led bike rebuilding course and provides them with the tools and instruction to safely and professionally re-build their own bike which they can keep upon completion of the course.

We are requesting funding to initiate our Re-Cycle Wiltshire bike project in Melksham, with a start date in September/October this year for the autumn school half term.

This is a project that we have not yet started in Wiltshire, but in the Melksham area, we are hoping to provide placements for 20 young people to take part in the Bike rebuilding course at two sites, yet to be officially confirmed - The Canberra Centre, and Oak School.

If we are successful in this funding bid, it will cover all costs of the project and as such participants will incur no costs what so ever. The Re-Cycle Wiltshire project will provide a free opportunity for at-risk young people in Melksham to focus on a practical, hands-on, supervised project from start to finish.

This is particularly useful for young people with difficulties engaging in mainstream education and those with additional needs, as it reinforces content retention, provides multi-sensory instruction, gives time for student-peer interaction, and allows for a deeper understanding a topic - in this case bicycle mechanics.

The participants will be able to attend for extended periods or for as long as the youth group, school, or college are able to allow time for the attending young person. On completion of the course the participant will be able to take the completed bicycle home at no extra cost. In addition they will be provided with a bicycle helmet and a short training session nearby for cycling safety and awareness. All of the young people will be encouraged to attend a local Bikeability course provided by Wiltshire Council for more extensive bike training.

This project will be inclusive and open to any young person, however we are intentionally aiming the project towards at-risk youth and will be working with local youth leaders and youth groups to direct the project towards those who will most benefit. It will provide opportunities for young people to improve their interpersonal skills, to develop listening and gain confidence from working and interacting with others as well as enhancing skills in cooperation - forging friendships as they do so.

Ultimately the project will provide a service by improving employability, providing an achievement record for school-college and generating access to local volunteering opportunities for local people.

By acting as a recycling service for Hills Waste, Wiltshire Constabulary and members of the public; which is where we shall be sourcing the scrapped bikes, this scheme we will ultimately be preventing hundreds of bicycles from being disposed of or dumped in the region each year and in a broader sense this shall provide a service by reducing the environmental impact from producing new bicycles.

Re-Cycle Wiltshire will also be Promoting the continued health benefits of using a bicycle and provide guidance on the safe use of suitable equipment, bicycle safety and cycling awareness. We are also working to promote the health benefits of cycling in general through planned local cycling events in association with Wiltshire Wildlife Trust in the Melksham region and further afield.

We further believe that by providing reclaimed safe bicycles for people on low incomes we are encouraging families to cycle together, which we hope will improve family wellbeing across the region. As an environmentally focused organization this project allows the Repair Academy to promote the environmental benefits of using a bicycle for short journeys instead of using a car, which will help work towards improving the air quality and local environment of Melksham. Through our social media and wider press outreach we shall be championing Melksham town with their involvement in a scheme that not only helps young people but also helps the environment too.

Wildlife Trust WWT and the Repair Academy are fully committed to safeguarding the welfare of all children, young people and vulnerable and protected adults. We recognize that everyone is entitled to the right of a safe, positive and enjoyable environment. Staff and

volunteers will work together to encourage the development of an ethos which embraces difference and diversity and respects the rights of children, young people and vulnerable adults.

We acknowledge our duty to act appropriately to any allegations, reports or suspicions of abuse and ensure that all staff and volunteers understand their legal and moral responsibility to protect children, young people and vulnerable adults from harm abuse and exploitation. We ensure Safe Recruiting procedures are always followed; including criminal record checks, disclosure and barring checks and the take up of references and that all staff and key volunteers will undertake Safeguarding training as appropriate for their role. All staff and volunteers understand their responsibility to work to the standards that are detailed in the organizations Child Safeguarding Procedures and Vulnerable Adults Safeguarding Procedures and work at all times towards maintaining the highest standards of practice.

The Repair Academy and WWT ensure that staff and volunteers understand their duty to report all concerns, allegations and suspicions of harm or abuse regarding a child, young person or vulnerable adult to the Trusts Designated Safeguarding Officers DSOs.

All allegations will be taken seriously and responded to swiftly fairly and appropriately. At all times we ensure the engagement of two DSOs, whose role is to provide staff and volunteers with a point of contact regarding training and advice on all Safeguarding matters. WWT and the Repair Academy's safeguarding practices reflect statutory responsibilities both national and local and government guidance complying at all times with best practice and regulatory requirements. We make sure that children, young people and vulnerable adults are enabled to express their ideas and views on a wide range of issues and have access to the organizations complaints procedure and that parents, carers, guardians and partner agencies are involved in the work of the organization and when requested have access to all guidelines and procedures.

All confidential records relating to safeguarding matters are maintained and stored securely in accordance with the General Data Protection Regulation GPDR and Data Protection Act 2018 and in line with WWT GPDR Policy and practice. All records should be as detailed and accurate as possible.

Finally we ensure the Safeguarding Steering Group which is chaired by a WWT Trustee meets on a regular basis to provide an overview and strategic direction with regard to WWT policies and procedures to protect children, young people and vulnerable adults.

The participants of the course will be monitored throughout the duration of the program through various methods. At the start of the course each participant will be given a short survey to complete, which details their expectations of the course and how confident and happy they are feeling initially.

At the end of every session there will be a checklist of activity learning that each young person will tick off and will highlight where further help or focus may be needed in the next session. These learning plans will be designed to allow the session leaders to see where any participant may need more help.

There will be various evaluation and monitoring forms for the participants to complete at the end of the course, which will detail the learning journey, confidence building and progress over time.

Most importantly the outcome and successful completion of the project will be evidenced in the fully repaired and safely functional bikes that each student will build. A completed bike will show the young person has finished the project well. Finally the participants will be signed off

as successfully completing the project and they will be presented with a certificate and a bike lock and helmet.

We have applied for the remaining £4,000 for this project through match funding from the Melksham Town Council. If this match funding is unsuccessful or this application to the Area Board is unsuccessful, we will attempt to deliver one of the proposed two courses in the Melksham area. If we cannot raise the full £8,000 it will reduce our offering and could delay our delivery but we shall attempt to do what we can with the money we raise.

Input from Community Engagement Manager: This is an application to the community youth grants scheme for revenue funding of £ 4,000 towards total project costs of £ 8,000. Match funding is being sought from Melksham Town Council. The proposal is to run 2 courses at 2 venues in the town, each supporting 10 young people, so a proposed total of 20 beneficiaries.

Report Author:

Peter Dunford, Melksham Area Board
01225 713060

Grant Applications for Melksham on 03/09/2019

ID	Grant Type	Project Title	Applicant	Amount Required
----	------------	---------------	-----------	-----------------

ID	Grant Type	Project Title	Applicant	Amount Required
725	Youth	Re-Cycle Wiltshire	Wiltshire Wildlife Trust	£4000.00

Submitted: 01/08/2019 11:06:31

ID: 725

Current Status: Application Appraisal

To be considered at this meeting:

tbc contact Community Area Manager

1. Which type of grant are you applying for?

Youth

2. Amount of funding required?

£501 - £5000

3. Are you applying on behalf of a Parish Council?

No

4. If yes, please state why this project cannot be funded from the Parish Precept

N/A

5. Project title?

Re-Cycle Wiltshire

6. Project summary:

The Repair Academy is a financially independent project parented by Wiltshire Wildlife Trust working to help at-risk youth groups and school children develop experience and skills - providing opportunity and learning through accomplishing focused group activity. The Re-Cycle Wiltshire bike scheme gives small groups of young people access to an instructor-led bike rebuilding course and provides them with the tools and instruction to safely and professionally re-build their own bike which they can keep upon completion of the course.

7. Which Area Board are you applying to?

Melksham

8. What is the Post Code of where the project is taking place?

SN12 7NY

9. Please tell us which theme(s) your project supports:

Informal education
Youth work/development
Employment or training
1:1/group work

If Other (please specify)

10. Finance:

10a. Your Organisation's Finance:

Your latest accounts:

03/2019

Total Income:

£60427.00

Total Expenditure:

£106261.00

Surplus/Deficit for the year:

£-45834.00

Free reserves currently held:

(money not committed to other projects/operating costs)

£0.00

Why can't you fund this project from your reserves:

We currently have no reserves to draw from for this budget.

We are a small community group and do not have annual accounts or it is our first year:

10b. Project Finance:

Total Project cost		£8000.00		
Total required from Area Board		£4000.00		
Expenditure (Itemised expenditure)	£	Income (Itemised income)	Tick if income confirmed	£
Safety equipment	1000.00	Grant match funding		4000.00
Tools	2000.00			
Parts	2500.00			
Bikeability course	800.00			
Staff costs (including Mileage)	1700.00			
Total	£8000			£4000

11. Have you or do you intend to apply for a grant from another area board within this financial year?

Yes

12. If so, which Area Boards?

Calne
Trowbridge

13. DECLARATION

Supporting information - Please confirm that the following documents will be available to inspect upon request:

Quotes:

I will make available on request 1 quote for individual project costs over £500 & 2 quotes for project costs over £1000 (Individual project costs are listed in the expenditure section above)

Project/Business Plan:

Yes, I will make available on request a **project or business plan** (including estimates) for projects where the **total project cost** (as declared in the financial section above) exceeds £50,000 (tick only when total project cost exceeds £50,000).

Other supporting information (Tick where appropriate, for some project these will not be applicable):

And finally...

Yes, the information on this form is correct, that any award received will be spent on the activities specified.

Melksham Re-cycle Wiltshire application - Local Youth Grant Detail

Started on: 01/08/2019

Current Status: Application Received

To be considered at this meeting:

tbc contact Community Area Manager

1. Project title? (Max. 8 words Eg. Tinkleton Village Youth Transport Project)

Re-Cycle Wiltshire

2. Project summary: (100 words)

The Repair Academy is a financially independent project parented by Wiltshire Wildlife Trust, working to help at-risk youth groups and school children develop experience and skills - providing opportunity and learning through accomplishing focused group activity.

The Re-Cycle Wiltshire bike scheme gives small groups of young people access to an instructor-led, bike rebuilding course and provides them with the tools and instruction to safely and professionally re-build their own bike, which they can keep upon completion of the course.

3. Amount of funding required:

£1001 - £5000

4. Which Area Board are you applying to? Not sure? -[check on a map](#)

Melksham

5. What is the Post Code of where the project is taking place?(If the application is for something that will move around to different locations please insert the post code for where it will be based for the majority of the time.)

SN12 7NY

6. Please tell us which theme(s) your project supports:

Informal education

- Youth work/development
- Sport/Leisure
- Residential
- Arts/Culture
- Employment or training
- 1:1/group work
- Community Project
- Community Safety
- Volunteering
- Environment
- Health
- Other

If Other (please specify)

7. About your project

Please tell us about your project (a strong application will address all of the following):

How does your project support local needs and priorities?

How have young people been involved in your project so far?

How many young people do you expect to benefit?

How will your project be accessible and affordable?

How will you encourage volunteering and community involvement?

How will you ensure your project is accessible to everyone (Disabled, low incomes, vulnerable, etc.)

How will ensure your project is inclusive?

How will you work with other community partners?

We are requesting funding to initiate our Re-Cycle Wiltshire bike project in Melksham, with a start date in September/October this year for the autumn school half term.

This is a project that we have not yet started in Wiltshire, but in the Melksham area, we are hoping to provide placements for 20 young people to take part in the Bike rebuilding course at two sites, yet to be officially confirmed - The Canberra Centre, and Oak School.

If we are successful in this funding bid, it will cover all costs of the project and as such participants will incur no costs what so ever. The Re-Cycle Wiltshire project will provide a free opportunity for at-risk young people in Melksham to focus on a practical, hands-on, supervised project from start to finish.

This is particularly useful for young people with difficulties engaging in mainstream education and those with additional needs, as it reinforces content retention, provides multi-sensory instruction, gives time for student-peer interaction, and allows for a deeper understanding a topic - in this case bicycle mechanics.

The participants will be able to attend for extended periods or for as long as the youth group, school, or college are able to allow time for the attending young person. On completion of the course the participant will be able to take the completed bicycle home at no extra cost. In addition they will be provided with a bicycle helmet and a short training session nearby for cycling safety and awareness. All of the young people will be encouraged to attend a local Bikeability course provided by Wiltshire Council for more extensive bike training.

This project will be inclusive and open to any young person, however we are intentionally aiming the project towards at-risk youth and will be working with local youth leaders and youth groups to direct the project towards those who will most benefit. It will provide opportunities for young people to improve their interpersonal skills, to develop listening and gain confidence from working and interacting with others as well as enhancing skills in cooperation - forging friendships as they do so

Ultimately the project will provide a service by improving employability, providing an achievement record for school-college and generating access to local volunteering opportunities for local people.

By acting as a recycling service for Hills Waste, Wiltshire Constabulary and members of the public; which is where we shall be sourcing the scrapped bikes, this scheme we will ultimately be preventing hundreds of bicycles from

being disposed of or dumped in the region each year and in a broader sense this shall provide a service by reducing the environmental impact from producing new bicycles.

Re-Cycle Wiltshire will also be Promoting the continued health benefits of using a bicycle and provide guidance on the safe use of suitable equipment, bicycle safety and cycling awareness. We are also working to promote the health benefits of cycling in general through planned local cycling events in association with Wiltshire Wildlife Trust in the Melksham region and further afield.

We further believe that by providing reclaimed safe bicycles for people on low incomes we are encouraging families to cycle together, which we hope will improve family wellbeing across the region. As an environmentally focused organization this project allows the Repair Academy to promote the environmental benefits of using a bicycle for short journeys instead of using a car, which will help work towards improving the air quality and local environment of Melksham. Through our social media and wider press outreach we shall be championing Melksham town with their involvement in a scheme that not only helps young people but also helps the environment too.

8. Safeguarding

Please tell us about how you will protect and safeguard young people in your project (You must address all of the following):

Please evidence your commitment to safeguarding and promoting the welfare of children and young people.

How do you make sure staff and volunteers understand their safeguarding responsibilities?

Are staff and volunteers Disclosure and Barring Service (DBS) checked and do you hold a central record of this as well as details of staff references.

Who in your organisation is ultimately responsible for safeguarding?

How do you ensure that young people are kept safe online when accessing your services?

Wildlife Trust WWT and the Repair Academy are fully committed to safeguarding the welfare of all children, young people and vulnerable and protected adults. We recognize that everyone is entitled to the right of a safe, positive and enjoyable environment. Staff and volunteers will work together to encourage the development of an ethos which embraces difference and diversity and respects the rights of children, young people and vulnerable adults.

We acknowledge our duty to act appropriately to any allegations, reports or suspicions of abuse and ensure that all staff and volunteers understand their legal and moral responsibility to protect children, young people and vulnerable adults from harm abuse and exploitation.

We ensure Safe Recruiting procedures are always followed; including criminal record checks, disclosure and barring checks and the take up of references and that all staff and key volunteers will undertake Safeguarding training as appropriate for their role.

All staff and volunteers understand their responsibility to work to the standards that are detailed in the organizations Child Safeguarding Procedures and Vulnerable Adults Safeguarding Procedures and work at all times towards maintaining the highest standards of practice.

The Repair Academy and WWT ensure that staff and volunteers understand their duty to report all concerns, allegations and suspicions of harm or abuse regarding a child, young person or vulnerable adult to the Trusts Designated Safeguarding Officers DSOs.

All allegations will be taken seriously and responded to swiftly fairly and appropriately. At all times we ensure the engagement of two DSOs, whose role is to provide staff and volunteers with a point of contact regarding training and advice on all Safeguarding matters. WWT and the Repair Academy's safeguarding practices reflect statutory responsibilities both national and local and government guidance complying at all times with best practice and regulatory requirements. We make sure that children, young people and vulnerable adults are enabled to express their ideas and views on a wide range of issues and have access to the organizations complaints procedure and that parents, carers, guardians and partner agencies are involved in the work of the organization and when requested have access to all guidelines and procedures.

All confidential records relating to safeguarding matters are maintained and stored securely in accordance with the General Data Protection Regulation GPDR and Data Protection Act 2018 and in line with WWT GPDR Policy and practice. All records should be as detailed and accurate as possible.

Finally we ensure the Safeguarding Steering Group which is chaired by a WWT Trustee meets on a regular basis to provide an overview and strategic direction with regard to WWT policies and procedures to protect children, young people and vulnerable adults.

9. Monitoring your project

How will you know if your project has been successful?

The participants of the course will be monitored throughout the duration of the program through various methods. At the start of the course each participant will be given a short survey to complete, which details their expectations of the course and how confident and happy they are feeling initially.

At the end of every session there will be a checklist of activity learning that each young person will tick off and will highlight where further help or focus may be needed in the next session. These learning plans will be designed to allow the session leaders to see where any participant may need more help.

There will be various evaluation and monitoring forms for the participants to complete at the end of the course, which will detail the learning journey, confidence building and progress over time.

Most importantly the outcome and successful completion of the project will be evidenced in the fully repaired and safely functional bikes that each student will build. A completed bike will show the young person has finished the project well. Finally the participants will be signed off as successfully completing the project and they will be presented with a certificate and a bike lock and helmet.

10. Finance: if you are a new organisation and don't have accounts leave blank and tick box below

10a. Your Organisation's Finance:

Your latest accounts:

03/2019

Total Income:

£60427.00

Total Expenditure:

£106261.00

Surplus/Deficit for the year:

£-45834.00

Free reserves currently held:

£0.00

Why can't you fund this project from your reserves:

We currently have no reserves to draw from for this budget.

10b. Project Finance:

Part One: *required

Total Project cost help	£8000.00
Total required from Area Board	£4000.00

Part Two: Please itemise your project expenditure and project income *required

Itemised Expenditure eg Materials help	£	Itemised Income eg Our reserves	£	Income confirmed?
Safety equipment	£1000.00		£	
Tools	£2000.00		£	
Parts	£2500.00		£	
Bikeability course	£800.00		£	
Staff costs (including Mileage)	£1700.00		£	
Total	£4000.00	Total	£	

We have applied for the remaining £4,000 for this project through match funding from the Melksham Council. If this match funding is unsuccessful or this application the Youth Area Board is unsuccessful, we will attempt to deliver one of the proposed two courses in the Melksham area. If we cannot raise the full

£8,000 it will reduce our offering and could delay our delivery but we shall attempt to do what we can with the money we raise.

11. Have you or do you intend to apply for a grant for this project from another area board within this financial year?

yes

12. Tick all the Area Boards to which you are intending to apply, including this one (You can apply to a maximum of 3 Area Boards for the same project in a financial year)

- Amesbury
- Bradford on Avon
- Calne
- Chippenham
- Corsham
- Devizes
- Malmesbury
- Marlborough
- Melksham
- Pewsey
- Salisbury
- Southern Wiltshire
- South West Wiltshire
- Tidworth
- Trowbridge
- Warminster
- Westbury
- Royal Wootton Bassett & Cricklade

13. DECLARATION

Supporting information

Do you have the following (please tick any that apply):

- Child Protection Policy
- Safeguarding Children
- Procedure for dealing with an allegation against a member of staff or a volunteer
- Complaints Procedure
- Public Liability Insurance
- Health & Safety
- Whistle blowing policy
- Internet use policy
- Constitution
- Annual Accounts
- Business/Project Plan (For projects where total project cost is over £50,000)

Legal declaration



The information on this form is correct, that any award received will be spent on the activities specified.